

Montana Performance Bull Co-op™

Annual Bull Sale
Friday • March 18, 2011
1:00 pm

Selling
115 Yearling Angus Bulls

Barragree/Johnson

Brian Barragree
Richard Johnson
406-322-5163 H
406-780-1219 C

Krone Angus

Chuck Krone
406-322-4605 H
406-321-0303 C

Stillwater Cattle Co.

Rob Aumueller
406-322-4493 H
406-321-2470 C

Winters Livestock

Bodie & Julie Winters
406-962-9163

Nueta Cattle Co.

Shawn Fredericks
406-592-3709

Casey Fredericks
701-548-8323

Susan Fredericks
406-259-2657

Mary Fredericks
701-627-4079

Midland Bull Test Sale Facility
Columbus, Montana

**Montana
Performance
Bull
Co-op™**

**Annual Bull Sale
Friday • March 18, 2011
1:00 pm**

403 Stillwater Drive • Columbus, MT 59019

Fellow Producers,

Welcome to our 4th annual bull sale. Thanks for taking the time to consider our breeding program.

The future of the cattle industry has never looked brighter. The nation's cow herd numbers are at an all time low. One thing that has not changed is the fact that pounds pay. As you look through the pages of this catalog, you will notice that our weaning weights are up, while we have lowered our birth weights. You will also see there are several large sire groups by some of the leading multi-trait bulls of the breed.

We would like to thank Steve and Lindsay Williams and their crew for the great job of developing our bulls. We would also like to thank our friends and families for their help and support throughout the year.

Sincerely,

The Consignors

Barragree/Johnson

Brian Barragree
Richard Johnson
406-322-5163 H
406-780-1219 C

Krone Angus

Chuck Krone
406-322-4605 H
406-321-0303 C

Stillwater Cattle Co.

Rob Aumueller
406-322-4493 H
406-321-2470 C

Winters Livestock

Bodie & Julie Winters
406-962-9163

Nueta Cattle Co.

Shawn Fredericks
406-592-3709

Casey Fredericks
701-548-8323

Susan Fredericks
406-259-2657

Mary Fredericks
701-627-4079

Auctioneer

Joe Goggins 406-254-6447

Livestock Press Representatives

Don Ravallatte 605-685-5147
Andy Rest 406-254-7576
Curt Cox 307-630-4604
John Goggins 406-259-4589

Special Assignment

Don Rehm

Sale Location

Midland Bull Test Facility
1640 Highway 10, Columbus, Montana

Terms & Conditions

Cattle sell under the terms and conditions recommended by the American Angus Association.

Health

All bulls have been fertility examined and semen tested by Dr. Bill Routen, Stillwater Veterinary Clinic. All bulls have been BVD tested, and are AM, NH and CA free.

Volume Discount

5% discount on 3 or more bulls over \$2,000.

Delivery

Bulls will be delivered free up to 500 miles after the sale. Bulls picked up sale day will receive a \$50 discount.

Feeding

If you wish, bulls can be fed at cost at Midland Bull Test for later delivery. When settling up, please make these arrangements.

Inspection

Bulls can be inspected prior to the sale at Midland Bull Test.

Guarantee

Bulls selling for \$2000 or more will be guaranteed for the first breeding season.

Liability

All persons attending the sale do so at their own risk. Montana Performance Bull Co-op and Midland Bull Test assumes no liability, legal or otherwise, for any accidents which may occur.



Reference Sires

Reference Sire

Sitz Upward 307R

Bull Calved 3/12/05 Reg. 14963730
 Connealy Lead On #
Connealy Onward
 Altune of Conanga 6104
 Sitz Value 7097 #
Sitz Henrietta Pride 81M
 Sitz Henrietta Pride 1370

Connealy Leadtime #
 Eligence Plus of Conanga
 G A R Traveler 1489 #
 Avalon 1418 of Conanga 6276
 Sitz Traveler 6802 #
 Sitz Eisa Evergreen 791 #
 O C C Great Plains 943G #
 Sitz Henrietta Pride 2155

BW	WW	Milk	YW	%IMF	RE	Fat
+2.4	+70	+43	+136	+0.36	+0.46	+0.022
\$EN	\$W	\$F	\$G	\$B		
-32.22	30.27	70.40	20.45	65.76		

Reference Sire

BPF Automatic

Bull Calved 2/14/05 Reg. 15141873
 S A F Focus of E R #
Mytty In Focus
 Mytty Countess 906
 G M C A Ext 7107
B P F Nell 043
 B P F Nell D H D 860

S A F Fame #
 G D A R Forever Lady 246
 Sitz Alliance 6595 #
 Baldrige Countess 357
 N Bar Emulation EXT #
 Sitz Emma 389 #
 D H D Traveler 6807 #
 B P F Nell 636

BW	WW	Milk	YW	%IMF	RE	Fat
+2.7	+60	+25	+102	+0.29	+0.07	-0.018
\$EN	\$W	\$F	\$G	\$B		
-7.35	29.38	37.38	23.20	48.32		

Reference Sire

S A V Pioneer 7301

Bull Calved 2/27/07 Reg. 15688392
 Sitz Traveler 8180 #
S A V Final Answer 0035 #
 S A V Emulous 8145
 Boyd New Day 8005 #
S A V Blackbird 5297
 S A V Blackbird 1082

G D A R Traveler 71 #
 Sitz Everelda Entense 1137
 Bon View Bando 598 #
 S A V Sky Emulous 2124
 A A R New Trend #
 S V F Forever Lady 57D
 S A F 598 Bando 5175 #
 S A V Blackbird 4036 #

BW	WW	Milk	YW	%IMF	RE	Fat
+1.8	+61	+31	+111	+0.47	+0.66	+0.027
\$EN	\$W	\$F	\$G	\$B		
-15.48	30.27	46.41	31.33	60.74		

Reference Sire

Rocking R Skyward

Bull Calved 1/14/08 Reg. 16067552
 Connealy Onward
SITZ UPWARD 307R
 Sitz Henrietta Pride 81M
 BR Midland #
LS Miss Ideal P274
 EXG Limestone Ideal M086

Connealy Lead On #
 Altune of Conanga 6104
 Sitz Value 7097 #
 Sitz Henrietta Pride 1370
 Twin Valley Precision E161 #
 BR Royal Lass 7036-19
 Bon View New Design 1407 #
 ALC Miss Ideal 9114

BW	WW	Milk	YW	%IMF	RE	Fat
+2.0	+62	+30	+117	+0.50	+0.31	+0.027
\$EN	\$W	\$F	\$G	\$B		
-16.89	28.08	52.47	25.24	62.48		

Reference Sire

S A V Final Answer 0035

Bull Calved 2/22/00 Reg. 13592905 #
 G D A R Traveler 71 #
Sitz Traveler 8180 #
 Sitz Everelda Entense 1137
 Bon View Bando 598 #
S A V Emulous 8145
 S A V Sky Emulous 2124

Traveler 1148 G D A R #
 G D A R Miss Blackcap 567
 G D A R Rainmaker 340 #
 Sitz Everelda Entense 2335
 Tehama Bando 155 #
 Bon View Dora 56 #
 Ellanin Sky Diver #
 Tail N 0383

BW	WW	Milk	YW	%IMF	RE	Fat
-1.0	+61	+19	+106	+0.41	+0.37	+0.042
\$EN	\$W	\$F	\$G	\$B		
14.30	49.85	41.12	25.80	47.37		

Reference Sire

S A V Bismarck 5682

Bull Calved 2/1/05 Reg. + 15109865
 G D A R Traveler 044 #
G A R Grid Maker #
 G A R Precision 2536
 Schoenes Fix It 826 #
S A V Abigale 0451
 S A V Abigale 6062

D H D Traveler 6807 #
 G D A R Blackcap Lady 840 #
 G A R Precision 1680 #
 G A R Ext 2104
 A A R New Trend #
 Sky High Blackbird 4119
 Bon View Emulation Ext 473 #
 Circle A Abigale 3008

BW	WW	Milk	YW	%IMF	RE	Fat
+0.2	+56	+23	+100	+0.14	+0.53	-0.008
\$EN	\$W	\$F	\$G	\$B		
-4.01	31.54	36.91	21.48	45.87		

Reference Sire

HARB Pendleton 765 J H

Bull Calved 2/7/05 Reg. 15313140
 Sitz Traveler 8180 #
S A V Final Answer 0035
 S A V Emulous 8145
 H A R B High Plains 975 JH #
H A R B Black Lady 375 JH #
 H A R B Black Lady 073 JH #

G D A R Traveler 71 #
 Sitz Everelda Entense 1137
 Bon View Bando 598 #
 S A V Sky Emulous 2124
 Sitz Alliance 6595 #
 Juanada Erica 9024 H A R B
 H A R B Cincha 829 #
 H A R B Black Lady G67 JH

BW	WW	Milk	YW	%IMF	RE	Fat
+0.2	+59	+29	+107	+0.41	0	+0.046
\$EN	\$W	\$F	\$G	\$B		
-12.81	31.38	42.99	16.28	47.44		

Reference Sire

BC Eagle Eye 110-7

Bull Calved 1/28/07 Reg. 15751696
 O C C Legend 616L
B C Lookout 7024
 Gibbet Hill Mignonne E37
 O C C Doctor 940D #
B C Pure Pride Erica D 110 #
 CAF Pure Pride Ext 99

O C C Emblazon 854E #
 O C C Blackbird 632J
 Papa Equator 2928 #
 Gibbet Hill Mignonne TR 29
 Rito 9FB3 of 5H11 Fullback #
 Dixie Erica of C H 1019
 N Bar Emulation EXT #
 Gibbet Hill Pure Pride CF 90

BW	WW	Milk	YW	%IMF	RE	Fat
+3.7	+64	+22	+106	+0.15	+0.41	+0.009
\$EN	\$W	\$F	\$G	\$B		
-3.97	29.97	39.91	15.27	51.11		



Lot 1

1 Krone Automatic 0034

Bull Calved 1/22/10 Reg. 16788429

Mytty In Focus # S A F Focus of E R #
BPF Automatic Mytty Countess 906
 B P F Nell 043 G M C A Ext 7107
 B P F Nell D H D 860

Connealy Frontline # Connealy Dateline #
Krone Barbara 3315 Pleasant Pill of Conanga #
 Indreland Barbara 9008 B/R New Design 036 #
 Indreland Ext 7020 #

EPDs	Sire	Dam
BW	+2.7	+2.3
WW	+60	+44
Milk	+25	+26
YW	+102	+82
Dam Production		
	4 NR	108

BW	WW	Milk	YW	\$EN	\$W	\$F	\$G	\$B
+2.2	+57	+26	I+102	-8.29	28.54	38.58	23.50	50.37
- Individual Performance -								
Marb	RE	Fat		BW	205	NR	YR	ADG
I+.34	I+.12	I-.001		85	748	115	117	4.08
Projected Sale Wt								
								1411



Lot 3

3 BCC Jaf Upward 15X

Bull Calved 1/27/10 Reg. 16754476

Connealy Onward Connealy Lead On #
SITZ UPWARD 307R Altune of Conanga 6104
 Sitz Henrietta Pride 81M Sitz Value 7097 #
 Sitz Henrietta Pride 1370

BR Midland # Twin Valley Precision E161 #
JAF Everelda Entense 75 BR Royal Lass 7036-19
 BT Everelda Entense 536P Leachman Right Time #
 BT Everelda Entense 226F #

EPDs	Sire	Dam
BW	+2.4	+2.6
WW	+70	+45
Milk	+43	+15
YW	+136	+86
Dam Production		
	3 NR	99

BW	WW	Milk	YW	\$EN	\$W	\$F	\$G	\$B
+2.6	+60	+29	I+120	-16.89	24.40	56.63	20.88	57.28
- Individual Performance -								
Marb	RE	Fat		BW	205	NR	YR	ADG
I+.32	I+.32	I+.022		89	766	103	113	3.79
Projected Sale Wt								
								1521



Lot 2

2 Krone Pioneer 0030

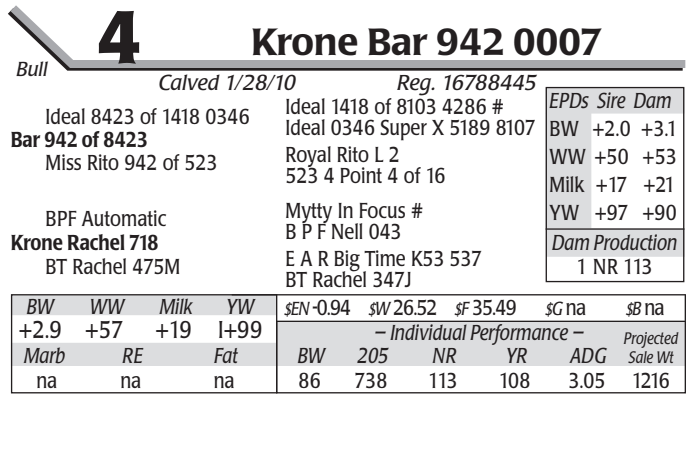
Bull Calved 1/30/10 Reg. 16791024

S A V Final Answer 0035 # Sitz Traveler 8180 #
S A V Pioneer 7301 S A V Emulous 8145
 S A V Blackbird 5297 Boyd New Day 8005 #
 S A V Blackbird 1082

WK Reward Connealy Network
Krone Henrietta Pride 815 WK Lola 1257 #
 Leachman Henrietta PRIDE309 Leachman Cascade #
 J R Henrietta Pride 015G #

EPDs	Sire	Dam
BW	+1.8	+2.6
WW	+61	+55
Milk	+31	+31
YW	+111	+95
Dam Production		
	1 NR	126

BW	WW	Milk	YW	\$EN	\$W	\$F	\$G	\$B
+2.0	+66	+31	I+111	-15.93	32.78	44.35	na	na
- Individual Performance -								
Marb	RE	Fat		BW	205	NR	YR	ADG
na	na	na		80	820	126	115	3.10
Projected Sale Wt								
								1259



Lot 4

4 Krone Bar 942 0007

Bull Calved 1/28/10 Reg. 16788445

Ideal 8423 of 1418 0346 Ideal 1418 of 8103 4286 #
Bar 942 of 8423 Ideal 0346 Super X 5189 8107
 Miss Rito 942 of 523 Royal Rito L 2
 523 4 Point 4 of 16

BPF Automatic Mytty In Focus #
Krone Rachel 718 B P F Nell 043
 BT Rachel 475M E A R Big Time K53 537
 BT Rachel 347J

EPDs	Sire	Dam
BW	+2.0	+3.1
WW	+50	+53
Milk	+17	+21
YW	+97	+90
Dam Production		
	1 NR	113

BW	WW	Milk	YW	\$EN	\$W	\$F	\$G	\$B
+2.9	+57	+19	I+99	-0.94	26.52	35.49	na	na
- Individual Performance -								
Marb	RE	Fat		BW	205	NR	YR	ADG
na	na	na		86	738	113	108	3.05
Projected Sale Wt								
								1216

5 SCC Lookout 66X

Bull Calved 2/10/10 Reg. 16709570

O C C Legend 616L O C C Emblazon 854E #
B C Lookout 7024 O C C Blackbird 632J
 Gibbet Hill Mignonne E37 Papa Equator 2928 #
 Gibbet Hill Mignonne TR 29

Boyd New Day 8005 # A A R New Trend #
BT Royal Pride 998P S V F Forever Lady 57D
 BT Royal Pride 237G O S U 6T6 Ultra #
 BT Royal Pride 326A

EPDs	Sire	Dam
BW	+2.6	+2.6
WW	+50	+62
Milk	+15	+30
YW	+84	+104
Dam Production		
	4 NR	107

BW	WW	Milk	YW	\$EN	\$W	\$F	\$G	\$B
+3.2	+57	+23	I+96	-3.62	27.77	32.45	23.78	54.48
- Individual Performance -								
Marb	RE	Fat		BW	205	NR	YR	ADG
I+.32	I+.43	I+.010		88	766	106	104	2.99
Projected Sale Wt								
								1323



7 TW Upward 35X

Bull Calved 2/1/10 Reg. 16685823

Connealy Onward SITZ UPWARD 307R Sitz Henrietta Pride 81M	Connealy Lead On # Altune of Conanga 6104 Sitz Value 7097 # Sitz Henrietta Pride 1370	EPDs Sire Dam BW +2.4 +3.0 WW +70 +61 Milk +43 +20 YW +136 +116
G A R Grid Maker # MAR Blackcap 5073 M A R Blackcap 1273	G D A R Traveler 044 # G A R Precision 2536 Bon View New Design 878 # K A F Blackcap 9053	Dam Production 3 NR 102
BW +3.4 WW +68 Milk +32 YW I+127	Individual Performance - BW 205 205 NR YR 107 ADG 103 Projected Sale Wt 1339	Projected Sale Wt 1339
Marb I+.29 RE I+.40 Fat I+.014		

10 BCC Jaf Pioneer 33X

Bull Calved 2/1/10 Reg. 16714453

S A V Final Answer 0035 # S A V Pioneer 7301 S A V Blackbird 5297	Sitz Traveler 8180 # S A V Emulous 8145 Boyd New Day 8005 # S A V Blackbird 1082	EPDs Sire Dam BW +1.8 +1.3 WW +61 +56 Milk +31 +31 YW +111 +106
WAR Alliance 9126 6006 # JAF Blacklady 530 4 C Black Lady 343	Sitz Alliance 6595 # WAR Bando 6006 598 4053 W C C Special Design L309 # Blacklady 431 B A M	Dam Production 4 NR 107
BW +1.9 WW +58 Milk +31 YW I+114	Individual Performance - BW 205 205 NR YR 103 ADG 111 Projected Sale Wt 1535	Projected Sale Wt 1535
Marb I+.37 RE I+.40 Fat I+.020		

8 Krone Skyward 0004

Bull Calved 2/28/10 Reg. 16788431

SITZ UPWARD 307R Rocking R Skyward LS Miss Ideal P274	Connealy Onward Sitz Henrietta Pride 81M BR Midland # EXG Limestone Ideal M086	EPDs Sire Dam BW +2.0 +0.5 WW +62 +39 Milk +30 +24 YW +117 +71
Bon View New Design 1407 # HBAR Dixie Erica 2004 RR Dixie Erica 6464	B/R New Design 036 # Bon View Pride 664 R R Ferdinand 758D # K M A Dixie Erica 8009	Dam Production 5 NR 104
BW +1.2 WW +56 Milk +27 YW I+99	Individual Performance - BW 78 205 NR YR 116 ADG 108 Projected Sale Wt 1206	Projected Sale Wt 1206
Marb I+.49 RE I+.20 Fat I+.006		

11 BCC Jaf Upward 93X

Bull Calved 2/17/10 Reg. 16714411

Connealy Onward SITZ UPWARD 307R Sitz Henrietta Pride 81M	Connealy Lead On # Altune of Conanga 6104 Sitz Value 7097 # Sitz Henrietta Pride 1370	EPDs Sire Dam BW +2.4 +3.5 WW +70 +49 Milk +43 +25 YW +136 +85
Sitz Alliance 5887 BT Primrose Lady 95P # BT Primrose Lady 517M	Sitz Alliance 6595 # Sitz Eisa Evergreen 2145 Top Secret 9757 E A R BT Primrose Lady 234G #	Dam Production 5 NR 107
BW +2.5 WW +58 Milk +34 YW I+110	Individual Performance - BW 87 205 NR YR 101 ADG 103 Projected Sale Wt 1341	Projected Sale Wt 1341
Marb I+.31 RE I+.18 Fat I+.015		

9 Krone Vegas 0005

Bull Calved 2/1/10 Reg. 16791526

Bon View New Design 1407 # WK Vegas WK Blackcap 3138 #	B/R New Design 036 # Bon View Pride 664 BR Midland # Lone Cone Blackcap 128	EPDs Sire Dam BW +4.4 +1.2 WW +62 +38 Milk +22 +28 YW +107 +69
Leachman Cascade # Leachman Henrietta PRIDE3079 J R Henrietta Pride 015G #	Connealy Frontline # Leachman Blackcap 3053 B/R New Design 036 # J R Henrietta Pride 023E	Dam Production 4 NR 106
BW +3.5 WW +52 Milk +25 YW I+87	Individual Performance - BW 92 205 NR YR 107 ADG 98 Projected Sale Wt 1137	Projected Sale Wt 1137
Marb I+.67 RE I+.07 Fat I+.021		

12 SCC Upward 1X

Bull Calved 1/20/10 Reg. 16709693

Connealy Onward SITZ UPWARD 307R Sitz Henrietta Pride 81M	Connealy Lead On # Altune of Conanga 6104 Sitz Value 7097 # Sitz Henrietta Pride 1370	EPDs Sire Dam BW +2.4 +2.2 WW +70 +46 Milk +43 +28 YW +136 +83
C F Right Design 1802 # SCC Royal Pride 27U BT Royal Pride 237G	Bon View New Design 1407 # Vision HF Blackcap 0015 # O S U 6T6 Ultra # BT Royal Pride 326A	Dam Production 1 NR 99
BW +3.3 WW +56 Milk +35 YW I+109	Individual Performance - BW 84 205 NR YR 99 ADG 102 Projected Sale Wt 1273	Projected Sale Wt 1273
Marb na RE na Fat na		

Recommended for larger heifers

13**BCC Jaf Upward 37X**

Bull Calved 2/1/10 Reg. 16714410

Connealy Onward
SITZ UPWARD 307R
Sitz Henrietta Pride 81M

V A R New Design 0313
JAF Blackbird 512
J A F Blackbird 08

Connealy Lead On #
Altune of Conanga 6104
Sitz Value 7097 #
Sitz Henrietta Pride 1370

B/R New Design 323 #
N Bar Primrose 2424
V D A R Traveler 556
J A F Blackbird Lass 55

EPDs Sire Dam
BW +2.4 +3.3
WW +70 +35
Milk +43 +22
YW +136 +58
Dam Production
4 NR 102

BW	WW	Milk	YW	\$EN-14.40	\$W 25.62	\$F 39.31	\$G 24.27	\$B 55.45	
+1.9	+50	+33	I+100	- Individual Performance -					Projected
Marb	RE	Fat		BW	205	NR	YR	ADG	
I+.36	I+.37	I+.015		81	711	95	105	3.39	



Lot 14



Lot 15

15**Krone Pioneer 0008**

Bull Calved 2/1/10 Reg. 16791056

S A V Final Answer 0035 #
S A V Pioneer 7301
S A V Blackbird 5297

Sitz Traveler 8180 #
S A V Emulous 8145
Boyd New Day 8005 #
S A V Blackbird 1082

Leachman Fundamental #
Leachman Blackbird 3007
Leachman Blackbird 1027

B/R New Design 036 #
Leachman Viola Lass 2066
Connealy Dateline #
Leachman Blackbird 9082

EPDs Sire Dam
BW +1.8 +0.6
WW +61 +41
Milk +31 +18
YW +111 +80
Dam Production
4 NR 101

BW	WW	Milk	YW	\$EN-7.04	\$W 28.18	\$F 38.74	\$G 27.15	\$B 52.66	
+1.4	+54	+25	I+101	- Individual Performance -					Projected
Marb	RE	Fat		BW	205	NR	YR	ADG	
I+.40	I+.40	I+.020		86	685	105	108	3.28	



Lot 16

16**Krone Skyward 0009**

Bull Calved 2/19/10 Reg. 16788440

SITZ UPWARD 307R
Rocking R Skyward
LS Miss Ideal P274

Connealy Onward
Sitz Henrietta Pride 81M
BR Midland #
EXG Limestone Ideal M086

BT Rolls Royce 407J #
BT Blackbird 549N
Fellman Blackbird 6928

G D A R Rolls Royce 203 #
BT Everelda Entense 57D
Sitz Traveler 8180 #
Fellman Blackbird 3156

EPDs Sire Dam
BW +2.0 +5.6
WW +62 +58
Milk +30 +26
YW +117 +109
Dam Production
4 NR 106

BW	WW	Milk	YW	\$EN-14.32	\$W 26.01	\$F 49.87	\$G 19.64	\$B 55.18	
+3.5	+63	+28	I+115	- Individual Performance -					Projected
Marb	RE	Fat		BW	205	NR	YR	ADG	
I+.37	I+.18	I+.025		88	723	111	108	3.33	

**Montana
Performance
Bull
Co-op™**

14**PCC BCC Eagle Eye 309X**

Bull Calved 1/19/10 Reg. 16720632

B C Lookout 7024
BC Eagle Eye 110-7
B C Pure Pride Erica D 110 #

Top Secret 9757 E A R
BT Polly 54L
Pauls Polly 671

O C C Legend 616L
Gibbet Hill Mignonne E37
O C C Doctor 940D #
CAF Pure Pride Ext 99

Traveler Power 137 E A R
RM Black Magic 7574 E A R #
Hylne SVF Option
Pauls High Polly 329

EPDs Sire Dam
BW +3.7 +0.5
WW +64 +45
Milk +22 +12
YW +106 +81
Dam Production
7 NR 100

BW	WW	Milk	YW	\$EN 3.62	\$W 25.70	\$F 28.39	\$G 7.87	\$B 35.62	
+2.7	+52	+17	I+90	- Individual Performance -					Projected
Marb	RE	Fat		BW	205	NR	YR	ADG	
I+.09	I+.17	I+.038		82	792	98	96	3.10	

Recommended for larger heifers



17 BCC Jaf Upward 41X

Bull Calved 2/3/10 Reg. 16714414

Connealy Onward
SITZ UPWARD 307R
Sitz Henrietta Pride 81M

Sitz Alliance 8199
BT Blackcap Lass 464P
BT Blackcap Lass 595K

Connealy Lead On #
Altune of Conanga 6104
Sitz Value 7097 #
Sitz Henrietta Pride 1370

Sitz Traveler 8180 #
Sitz Eisa Evergreen 1572 #
O S U 6T6 Ultra #
BT Blackcap Lass 152D

EPDs	Sire	Dam
BW	+2.4	+3.9
WW	+70	+37
Milk	+43	+20
YW	+136	+67
Dam Production		
	4	NR 96

BW	WW	Milk	YW	\$EN	\$W	\$F	\$G	\$B	\$C
+3.3	+58	+31	I+104	-13.70	\$26.86	\$40.25	\$17.53	\$8	48.23
- Individual Performance -									
Marb	RE	Fat	BW	205	NR	YR	ADG	Projected Sale Wt	
I+.29	I+.07	I+.016	92	786	105	100	2.82	1329	

20 SCC Beyond 106X TMK

Bull Calved 3/2/10 Reg. 16672246

Connealy Onward
SITZ UPWARD 307R
Sitz Henrietta Pride 81M

Bon View New Design 1407 #
T M K Lucy Design 102N
Sun Lucy Traveler 14D

Connealy Lead On #
Altune of Conanga 6104
Sitz Value 7097 #
Sitz Henrietta Pride 1370

B/R New Design 036 #
Bon View Pride 664
Sunrise Starky 1692
Flying U Lucy Traveler B402

EPDs	Sire	Dam
BW	+2.4	+0.3
WW	+70	+31
Milk	+43	+22
YW	+136	+59
Dam Production		
	6	NR 99

BW	WW	Milk	YW	\$EN	\$W	\$F	\$G	\$B	\$C
I+1.4	I+51	I+33	I+98	-13.78	\$27.90	\$36.85	\$27.80	\$8	57.90
- Individual Performance -									
Marb	RE	Fat	BW	205	NR	YR	ADG	Projected Sale Wt	
I+.46	I+.34	I+.012	81	719	107	100	2.93	1250	

Recommended for larger heifers

18 Nueta Danny Boy 41X

Bull Calved 2/4/10 Reg. + 16833219

Connealy Timeline #
Connealy Danny Boy #
Energy of Conanga 4851

Hoff Westwind S C 070 #
Hoff Moriah S C 635
Hoff Miss Sunshine S C 9262

Connealy Dateline #
Enchants Fortune Conanga6127 #
Hoff Heartland S C 456 #
Dividends Envy of Conanga #

Hoff Great Western S C 456 #
Hoff Miss Spade S C 803
S V F Bandler
Hoff Miss Val S C 282

EPDs	Sire	Dam
BW	+0.4	+7.3
WW	+52	+39
Milk	+6	+27
YW	+93	+83
Dam Production		
	7	NR 104

BW	WW	Milk	YW	\$EN	\$W	\$F	\$G	\$B	\$C
I+3.9	I+46	I+17	I+88	4.24	\$19.49	\$28.71	\$21.27	\$8	54.50
- Individual Performance -									
Marb	RE	Fat	BW	205	NR	YR	ADG	Projected Sale Wt	
I+.28	I+.43	I+.007	120	780	ET	ET	3.22	1406	

22 Krone Pioneer 0003

Bull Calved 1/20/10 Reg. 16791029

S A V Final Answer 0035 #
S A V Pioneer 7301
S A V Blackbird 5297

Summitcrest High Prime 0H29 #
Krone Erica 5514
Krone Erica 1125

Sitz Traveler 8180 #
S A V Emulous 8145
Boyd New Day 8005 #
S A V Blackbird 1082

Gardens Prime Time #
Summitcrest Missie 2F55
GDAR SVF Traveler 234D #
Leachman Erica 6267

EPDs	Sire	Dam
BW	+1.8	+2.6
WW	+61	+46
Milk	+31	+20
YW	+111	+79
Dam Production		
	4	NR 98

BW	WW	Milk	YW	\$EN	\$W	\$F	\$G	\$B	\$C
+1.6	+53	+26	I+97	-6.72	\$28.56	\$35.03	\$33.59	\$8	59.42
- Individual Performance -									
Marb	RE	Fat	BW	205	NR	YR	ADG	Projected Sale Wt	
I+.52	I+.50	I+.002	80	645	99	104	3.62	1252	

Heifer bull

19 Krone Pioneer 0001

Bull Calved 2/1/10 Reg. 16791059

S A V Final Answer 0035 #
S A V Pioneer 7301
S A V Blackbird 5297

D H D Traveler 6807 #
Leachman Blackcap 6014
Leachman Blackcap 4060

Sitz Traveler 8180 #
S A V Emulous 8145
Boyd New Day 8005 #
S A V Blackbird 1082

Q A S Traveler 23-4 #
Bemindful Maid D H D 0807 #
Leachman Right Time #
Leachman Blackcap 0200

EPDs	Sire	Dam
BW	+1.8	+0.8
WW	+61	+35
Milk	+31	+14
YW	+111	+64
Dam Production		
	11	NR 99

BW	WW	Milk	YW	\$EN	\$W	\$F	\$G	\$B	\$C
-0.2	+54	+23	I+95	-3.31	\$31.23	\$32.61	\$22.89	\$8	42.22
- Individual Performance -									
Marb	RE	Fat	BW	205	NR	YR	ADG	Projected Sale Wt	
I+.24	I+.38	I+.013	72	708	108	110	3.79	1296	

Heifer bull

23 Nueta Danny Boy 47X

Bull Calved 2/7/10 Reg. + 16833221

Connealy Timeline #
Connealy Danny Boy #
Energy of Conanga 4851

Hoff Westwind S C 070 #
Hoff Moriah S C 635
Hoff Miss Sunshine S C 9262

Connealy Dateline #
Enchants Fortune Conanga6127 #
Hoff Heartland S C 456 #
Dividends Envy of Conanga #

Hoff Great Western S C 456 #
Hoff Miss Spade S C 803
S V F Bandler
Hoff Miss Val S C 282

EPDs	Sire	Dam
BW	+0.4	+7.3
WW	+52	+39
Milk	+6	+27
YW	+93	+83
Dam Production		
	7	NR 104

BW	WW	Milk	YW	\$EN	\$W	\$F	\$G	\$B	\$C
I+3.9	I+46	I+17	I+88	4.24	\$19.49	\$28.71	\$21.27	\$8	54.50
- Individual Performance -									
Marb	RE	Fat	BW	205	NR	YR	ADG	Projected Sale Wt	
I+.28	I+.43	I+.007	130	773	ET	ET	3.74	1448	

24 SCC Pioneer 90X

Bull Calved 2/16/10 Reg. 16709683

S A V Final Answer 0035 #	Sitz Traveler 8180 #	EPDs Sire Dam
S A V Pioneer 7301	S A V Emulous 8145	BW +1.8 +6.6
S A V Blackbird 5297	Boyd New Day 8005 #	WW +61 +60
	S A V Blackbird 1082	Milk +31 +27
		YW +111 +111
M A Broadside 1334-822	Bon View New Design 878 #	Dam Production
SCC Hattie 38T	MA Miss Emulous 822	2 NR 112
BT Hattie 562P	B C C Bushwacker 41-93 #	
	BT Hattie 355H	

BW	WW	Milk	YW	\$EN-15.28	\$W23.68	\$F50.71	\$G23.15	\$B57.04	
+4.0	+61	+29	I+115	- Individual Performance -					Projected
Marb	RE	Fat		BW	205	NR	YR	ADG	Sale Wt
I+.32	I+.43	I+.019		85	762	105	109	3.39	1350

27 BCC Jaf Bismarck 19X

Bull Calved 1/28/10 Reg. 16714426

G A R Grid Maker #	G D A R Traveler 044 #	EPDs Sire Dam
S A V Bismarck 5682	G A R Precision 2536	BW +0.2 +2.5
S A V Abigale 0451	Schoenes Fix It 826 #	WW +56 +43
	S A V Abigale 6062	Milk +23 +22
		YW +100 +79
W C C Special Design L309 #	Bon View New Design 878 #	Dam Production
4 C Lucy Special 331	N Bar Primrose 2424	6 NR 104
K A R Lucy 031	W C C Special Design L309 #	
	V D A R Lucys Boy #	
	V D A R Beauty 441	

BW	WW	Milk	YW	\$EN-1.15	\$W28.47	\$F29.77	\$G23.33	\$B42.83	
+1.5	+51	+22	I+91	- Individual Performance -					Projected
Marb	RE	Fat		BW	205	NR	YR	ADG	Sale Wt
I+.34	I+.16	I+.017		87	760	102	100	3.39	1370

Heifer bull



Lot 25

28 JAF Final Answer 022

Bull Calved 2/28/10 Reg. 16729405

Sitz Traveler 8180 #	G D A R Traveler 71 #	EPDs Sire Dam
S A V Final Answer 0035 #	Sitz Everelda Entense 1137	BW -1.0 +1.9
S A V Emulous 8145	Bon View Bando 598 #	WW +61 +63
	S A V Sky Emulous 2124	Milk +19 +29
		YW +106 +103
H A Image Maker 0415 #	Hero 6267 of R R 2418 #	Dam Production
JAF Eileenmere 805	H A Rito Blackcap 9038	1 NR 112
J & S Eileenmere 522	W C C Special Design L309 #	
	K A R Saratoga Cowgirl	

BW	WW	Milk	YW	\$EN-8.00	\$W33.05	\$F41.36	\$G21.94	\$B45.86	
+0.6	+63	+24	I+107	- Individual Performance -					Projected
Marb	RE	Fat		BW	205	NR	YR	ADG	Sale Wt
I+.32	I+.13	I+.015		79	774	112	109	2.59	1122

Heifer bull

25 BCC Jaf Pendleton 62X

Bull Calved 2/10/10 Reg. + 16714444

S A V Final Answer 0035 #	Sitz Traveler 8180 #	EPDs Sire Dam
HARB Pendleton 765 J H	S A V Emulous 8145	BW +0.2 +2.3
H A R B Black Lady 375 J H #	H A R B High Plains 975 J H #	WW +59 +35
	H A R B Black Lady 073 J H #	Milk +29 +12
		YW +107 +74
Leachman Right Time #	N Bar Emulation EXT #	Dam Production
BT Everelda Entense 58L	Leachman Erica 0025	6 NR 93
BT Everelda Entense 251F	Beartooth Ice 82D #	
	Sitz Everelda Entense 1905	

BW	WW	Milk	YW	\$EN-0.24	\$W25.66	\$F31.32	\$G20.23	\$B31.05	
I+1.3	I+47	I+21	I+91	- Individual Performance -					Projected
Marb	RE	Fat		BW	205	NR	YR	ADG	Sale Wt
I+.15	I-.08	I+.033		84	740	ET	ET	3.79	1371

Heifer bull

29 TW Bismarck 111X

Bull Calved 2/23/10 Reg. 16685825

G A R Grid Maker #	G D A R Traveler 044 #	EPDs Sire Dam
S A V Bismarck 5682	G A R Precision 2536	BW +0.2 +2.4
S A V Abigale 0451	Schoenes Fix It 826 #	WW +56 +65
	S A V Abigale 6062	Milk +23 +28
		YW +100 +102
Griffs V R D L017	Vermilion Dateline 7078 #	Dam Production
CCAR Beauty P319	Vermilion B Jestress 3912	5 NR 107
Griffs Beauty L267	Sitz Alliance 7059	
	Griffs Beauty 926	

BW	WW	Milk	YW	\$EN-8.60	\$W32.72	\$F37.21	\$G22.48	\$B46.07	
+2.0	+63	+26	I+103	- Individual Performance -					Projected
Marb	RE	Fat		BW	205	NR	YR	ADG	Sale Wt
I+.26	I+.30	I+.008		87	775	110	103	2.70	1248

26 Krone Skyward 0028

Bull Calved 2/10/10 Reg. 16788430

SITZ UPWARD 307R	Connealy Onward	EPDs Sire Dam
Rocking R Skyward	Sitz Henrietta Pride 81M	BW +2.0 +0.6
LS Miss Ideal P274	BR Midland #	WW +62 +35
	EXG Limestone Ideal M086	Milk +30 +23
		YW +117 +66
Leachman Time Traveler 7620	Leachman Right Time #	Dam Production
Leachman Blackcap 0216	Leachman Blackcap 2046	8 NR 103
Leachman Blackcap 4042	Leachman Agent	
	Leachman Blackcap 1111 #	

BW	WW	Milk	YW	\$EN-5.78	\$W27.20	\$F33.17	\$G20.23	\$B46.39	
+1.7	+50	+26	I+94	- Individual Performance -					Projected
Marb	RE	Fat		BW	205	NR	YR	ADG	Sale Wt
I+.31	I+.22	I+.026		84	693	106	104	2.82	1169

30 Krone Upward 0020

Bull Calved 2/4/10 Reg. 16791142

Connealy Onward	Connealy Lead On #	EPDs Sire Dam
SITZ UPWARD 307R	Altune of Conanga 6104	BW +2.4 +2.6
Sitz Henrietta Pride 81M	Sitz Value 7097 #	WW +70 +49
	Sitz Henrietta Pride 1370	Milk +43 +14
		YW +136 +84
Hyline Right Way 781 #	Hyline Right Time 338 #	Dam Production
BT Evergreen 840P	Hyline Eilen 86	3 NR 95
BT Evergreen 129G #	S A F Fame #	
	BT Evergreen 17E	

BW	WW	Milk	YW	\$EN-12.40	\$W29.78	\$F41.12	\$G17.77	\$B53.44	
+2.5	+61	+29	I+106	- Individual Performance -					Projected
Marb	RE	Fat		BW	205	NR	YR	ADG	Sale Wt
I+.25	I+.37	I+.018		85	662	101	94	2.70	1093

31 BCC Jaf Pioneer 4X

Bull Calved 1/22/10 Reg. 16714451

		EPDs		Sire		Dam	
S A V Final Answer 0035 #	Sitz Traveler 8180 #	BW	+1.8	+1.7			
S A V Pioneer 7301	S A V Emulous 8145	WW	+61	+37			
S A V Blackbird 5297	Boyd New Day 8005 #	Milk	+31	+25			
	S A V Blackbird 1082	YW	+111	+70			
N Bar Emulation EXT #	Emulation N Bar 5522 #	Dam Production					
JAF Everelda Entense 79S	N Bar Primrose 2424	2 NR 101					
BT Everelda Entense 53K	Prototype 5102 E A R						
	BT Everelda Entense 57D						

BW	WW	Milk	YW	\$EN	\$W	\$F	\$G	\$B	na
+2.4	+49	+28	I+92	-7.05	25.96	31.54	na	na	na
- Individual Performance -									
Marb	RE	Fat		BW	205	NR	YR	ADG	Projected Sale Wt
na	na	na		89	743	99	101	3.22	1351

34 Nueta Shear Force 35X

Bull Calved 2/1/10 Reg. + 16833248

		EPDs		Sire		Dam	
N Bar Prime Time D806 #	Gardens Prime Time #	BW	+2.6	+3.4			
G T Shear Force	N Bar Miss Emulous A404	WW	+51	+29			
G T Siskin 106 #	Plowman 1627 of Millbrae SAR	Milk	+23	+16			
	G T Rosalita 509	YW	+107	+54			
Hoff Bull Durham S C 846 #	R&J D F W 1388 #	Dam Production					
Hoff Lady Durham S C 540 #	Hoff Valentine S C 856	11 NR 100					
Hoff Dallas of S C 766	R&J Dallas 752 #						
	Rito 91 of S C 513						

BW	WW	Milk	YW	\$EN	\$W	\$F	\$G	\$B	
I+3.0	I+40	I+20	I+81	8.80	25.21	24.12	21.62	46.04	
- Individual Performance -									
Marb	RE	Fat		BW	205	NR	YR	ADG	Projected Sale Wt
I+.50	I-.05	I+.031		92	645	ET	ET	2.82	1214

32 PCC BCC Pioneer 324X

Bull Calved 2/24/10 Reg. 16720624

		EPDs		Sire		Dam	
S A V Final Answer 0035 #	Sitz Traveler 8180 #	BW	+1.8	+2.3			
S A V Pioneer 7301	S A V Emulous 8145	WW	+61	+38			
S A V Blackbird 5297	Boyd New Day 8005 #	Milk	+31	+20			
	S A V Blackbird 1082	YW	+111	+84			
Alberda Traveler 416 #	D H D Traveler 6807 #	Dam Production					
BT Hattie 264M #	Alberda Queen Kimberly 222	7 NR 105					
BT Hattie 378H	Bon View Emulation Ext 473 #						
	Rocky Branch Promptitude 803						

BW	WW	Milk	YW	\$EN	\$W	\$F	\$G	\$B	
+2.6	+47	+26	I+96	-6.22	22.78	36.39	29.00	54.69	
- Individual Performance -									
Marb	RE	Fat		BW	205	NR	YR	ADG	Projected Sale Wt
I+.47	I+.33	I+.015		82	812	100	102	2.59	1207

Recommended for larger heifers

35 Krone Bar 942 0026

Bull Calved 1/31/10 Reg. 16788438

		EPDs		Sire		Dam	
Ideal 8423 of 1418 0346	Ideal 1418 of 8103 4286 #	BW	+2.0	+0.7			
Bar 942 of 8423	Ideal 0346 Super X 5189 8107	WW	+50	+19			
Miss Rito 942 of 523	Royal Rito L 2	Milk	+17	+25			
	523 4 Point 4 of 16	YW	+97	+54			
Leachman Dateline 8661	Connealy Dateline #	Dam Production					
BT Blackcap Lady 521N	Leachman Blackcap 3053	4 NR 103					
G D A R Blackcap Lady 396	Rito 2100 G D A R #						
	G D A R Blackcap Lady 852						

BW	WW	Milk	YW	\$EN	\$W	\$F	\$G	\$B	
-0.3	+34	+21	I+74	4.94	22.97	19.63	15.89	38.68	
- Individual Performance -									
Marb	RE	Fat		BW	205	NR	YR	ADG	Projected Sale Wt
I+.18	I+.10	I+.007		72	626	96	97	3.05	1136

Heifer bull



33 BCC Jaf Bismarck 7X

Bull Calved 1/23/10 Reg. 16714425

		EPDs		Sire		Dam	
G A R Grid Maker #	G D A R Traveler 044 #	BW	+0.2	+4.1			
S A V Bismarck 5682	G A R Precision 2536	WW	+56	+55			
S A V Abigale 0451	Schoenes Fix It 826 #	Milk	+23	+25			
	S A V Abigale 6062	YW	+100	+98			
P V F New Horizon 001 #	B/R New Design 323 #	Dam Production					
J K Misse 8009	Hyline Ellen 410	1 NR 102					
Laffins Missie 3009	Connealy Forefront #						
	Roth Missie 1097						

BW	WW	Milk	YW	\$EN	\$W	\$F	\$G	\$B	
+2.8	+56	+24	I+96	-4.54	28.13	32.84	na	na	
- Individual Performance -									
Marb	RE	Fat		BW	205	NR	YR	ADG	Projected Sale Wt
na	na	na		84	759	102	96	3.22	1241

Heifer bull

36 SCC Reachout 75X

Bull Calved 2/12/10 Reg. 16713297

		EPDs		Sire		Dam	
Connealy Reflection	Bon View New Design 878 #	BW	+3.3	+1.6			
MCATL Reachout 836	Happy Grill of Conanga 6260	WW	+61	+38			
MA Lady Barbara 453	TC Freedom 104 #	Milk	+32	+26			
	Lady Barbara 348 M M #	YW	+99	+79			
Sitz Alliance 8199	Sitz Traveler 8180 #	Dam Production					
BT Pride 311R	Sitz Eisa Evergreen 1572 #	4 NR 103					
BT Pride 50J	TC Dividend 963 #						
	BT Pride 188G						

BW	WW	Milk	YW	\$EN	\$W	\$F	\$G	\$B	
+1.0	+50	+29	I+86	-6.16	31.01	25.22	20.59	39.14	
- Individual Performance -									
Marb	RE	Fat		BW	205	NR	YR	ADG	Projected Sale Wt
I+.31	I+.01	I+.013		77	735	101	94	2.99	1208

Heifer bull

37 Neuta Shear Force 33X

Bull Calved 2/1/10 Reg. + 16833251

N Bar Prime Time D806 #	Gardens Prime Time #	EPDs Sire Dam
GT Shear Force	N Bar Miss Emulous A404	BW +2.6 +2.8
G T Siskin 106 #	Plowman 1627 of Millbrae SAR #	WW +51 +39
	G T Rosalita 509	Milk +23 +14
		YW +107 +61
Hoff Charger S C 242	S A R Supercharger 8418	Dam Production
Hoff Barbara S C 929 984	Hoff Miss Flyer S C E01	4 NR 99
Hoff Miss Renovation S C 856 #	ONeills Renovator #	
	Hoff Rito 72 of S C 259 #	

BW	WW	Milk	YW	\$EN 6.36	\$W 25.83	\$F 25.16	\$G 18.61	\$B 40.98	
I+2.7	I+45	I+19	I+84	- Individual Performance -					Projected
Marb	RE	Fat		BW	205	NR	YR	ADG	
I+.32	I-.02	I+.019		105	674	ET	ET	2.99 1263	

41 TW Pendleton 91X

Bull Calved 2/16/10 Reg. + 16685827

S A V Final Answer 0035 #	Sitz Traveler 8180 #	EPDs Sire Dam
HARB Pendleton 765 J H	S A V Emulous 8145	BW +0.2 +3.0
H A R B Black Lady 375 J H #	H A R B High Plains 975 JH #	WW +59 +61
	H A R B Black Lady 073 J H #	Milk +29 +20
		YW +107 +116
G A R Grid Maker #	G D A R Traveler 044 #	Dam Production
MAR Blackcap 5073	G A R Precision 2536	3 NR 102
M A R Blackcap 1273	Bon View New Desjgn 878 #	
	K A F Blackcap 9053	

BW	WW	Milk	YW	\$EN -10.53	\$W 28.47	\$F 47.89	\$G 20.16	\$B 48.19	
I+1.6	I+60	I+25	I+112	- Individual Performance -					Projected
Marb	RE	Fat		BW	205	NR	YR	ADG	
I+.31	I+.17	I+.026		90	672	ET	ET	2.82 1179	

38 BCC Jaf Lookout 53X

Bull Calved 2/8/10 Reg. + 16714346

O C C Legend 616L	O C C Emblazon 854E #	EPDs Sire Dam
B C Lookout 7024	O C C Blackbird 632J	BW +2.6 +1.3
Gibbet Hill Mignonne E37	Papa Equator 2928 #	WW +50 +30
	Gibbet Hill Mignonne TR 29	Milk +15 +29
		YW +84 +62
Prototype 5102 E A R	Rito 2100 G D A R #	Dam Production
BT Everelda Entense 53K	Band Blanche Em 102	4 NR 101
BT Everelda Entense 57D	Leachman Right Time #	
	Sitz Everelda Entense 1905	

BW	WW	Milk	YW	\$EN 6.73	\$W 27.50	\$F 16.50	\$G 18.14	\$B 41.09	
I+2.0	I+40	I+22	I+73	- Individual Performance -					Projected
Marb	RE	Fat		BW	205	NR	YR	ADG	
I+.27	I+.21	I+.030		70	714	ET	ET	2.64 1240	

Recommended for larger heifers. We retained a full brother for use in our herd last year.

42 PCC BCC Pioneer 316X

Bull Calved 1/31/10 Reg. 16785065

S A V Final Answer 0035 #	Sitz Traveler 8180 #	EPDs Sire Dam
S A V Pioneer 7301	S A V Emulous 8145	BW +1.8 +3.0
S A V Blackbird 5297	Boyd New Day 8005 #	WW +61 +44
	S A V Blackbird 1082	Milk +31 +18
		YW +111 +88
O C R Douglas	Ironwood New Level #	Dam Production
Pine Coulee Lass 832	O C C Frontier Miss B403	1 NR 89
Vermilion Lass 1091	Leachman Right Time #	
	Vermilion Lass 9335	

BW	WW	Milk	YW	\$EN -7.04	\$W 21.70	\$F 41.57	\$G na	\$B na	
+2.2	+47	+25	I+101	- Individual Performance -					Projected
Marb	RE	Fat		BW	205	NR	YR	ADG	
na	na	na		78	738	89	104	3.56 1329	

Heifer bull

39 R&R Dexter Eagle Eye 004

Bull Calved 2/8/10 Reg. 16804993

B C Lookout 7024	O C C Legend 616L	EPDs Sire Dam
BC Eagle Eye 110-7	Gibbet Hill Mignonne E37	BW +3.7 +2.4
B C Pure Pride Erica D 110 #	O C C Doctor 940D #	WW +64 +30
	CAF Pure Pride Ext 99	Milk +22 +21
		YW +106 +51
Schmaus Emulation 119D	Emulation 31 #	Dam Production
Schmaus 1190 94F	Nugget Scotch 101B #	7 NR 100
Schmaus Easy 29D #	Emulation Easy 85X	
	Blackcap Emulation 89B	

BW	WW	Milk	YW	\$EN 1.61	\$W 28.49	\$F 21.35	\$G 19.10	\$B 42.29	
+2.5	+50	+22	+82	- Individual Performance -					Projected
Marb	RE	Fat		BW	205	NR	YR	ADG	
I+.24	I+.13	I+.005		83	837	107	100	2.64 1265	

43 Krone Skyward 0023

Bull Calved 2/3/10 Reg. 16788432

SITZ UPWARD 307R	Connealy Onward	EPDs Sire Dam
Rocking R Skyward	Sitz Henrietta Pride 81M	BW +2.0 +1.6
LS Miss Ideal P274	BR Midland #	WW +62 +40
	EXG Limestone Ideal M086	Milk +30 +14
		YW +117 +76
J R Rockn Ambush 220H	Rockn D Ambush 1531 #	Dam Production
Wards Eldorene 0106	J R Blackbird 205B	8 NR 100
Wards Eldorene 724	N Bar Explosion #	
	Wards Eldorene 444	

BW	WW	Milk	YW	\$EN -1.77	\$W 25.84	\$F 32.55	\$G 25.89	\$B 54.39	
+1.8	+49	+22	I+93	- Individual Performance -					Projected
Marb	RE	Fat		BW	205	NR	YR	ADG	
I+.44	I+.17	I+.005		624	96	95	3.10	1099	

40 BCC Jaf Upward 51X

Bull Calved 2/7/10 Reg. 16714413

Connealy Onward	Connealy Lead On #	EPDs Sire Dam
SITZ UPWARD 307R	Altune of Conanga 6104	BW +2.4 +2.4
Sitz Henrietta Pride 81M	Sitz Value 7097 #	WW +70 +49
	Sitz Henrietta Pride 1370	Milk +43 +29
		YW +136 +83
Sitz Alliance 6595 #	Sitz Traveler 8180 #	Dam Production
BT MS Witch 370P #	Sitz Barbaramere Jet 2698 #	5 NR 106
BT MS Witch 116L	BT Rolls Royce 407J #	
	Jri MS Traveler 236D3	

BW	WW	Milk	YW	\$EN -20.25	\$W 33.43	\$F 43.46	\$G 15.30	\$B 48.33	
+0.7	+63	+36	I+109	- Individual Performance -					Projected
Marb	RE	Fat		BW	205	NR	YR	ADG	
I+.24	I+.21	I+.029		75	819	110	102	3.45 1363	



Lot **40**

44 BCC PC UPWARD 68X

Bull Calved 2/11/10 Reg. 16704504

Connealy Onward SITZ UPWARD 307R Sitz Henrietta Pride 81M	Connealy Lead On # Altune of Conanga 6104 Sitz Value 7097 # Sitz Henrietta Pride 1370	EPDs Sire Dam BW +2.4 +0.9 WW +70 +48 Milk +43 +29 YW +136 +80
C F Right Design 1802 # JAF MS Witch 3S BT MS Witch 370P #	Bon View New Design 1407 # Vision HF Blackcap 0015 # Sitz Alliance 6595 # BT MS Witch 116L	Dam Production 3 NR 106

BW	WW	Milk	YW	\$EN-19.29	\$W28.10	\$F42.34	\$G23.04	\$B56.68
+2.5	+58	+36	I+106	- Individual Performance -				Projected
Marb	RE	Fat		BW	205	NR	YR	ADG
I+.30	I+.45	I+.009		89	750	104	101	3.33

45 JAF Pioneer 004

Bull Calved 2/4/10 Reg. 16729434

S A V Final Answer 0035 # S A V Pioneer 7301 S A V Blackbird 5297	Sitz Traveler 8180 # S A V Emulous 8145 Boyd New Day 8005 # S A V Blackbird 1082	EPDs Sire Dam BW +1.8 +2.4 WW +61 +32 Milk +31 +25 YW +111 +68
Mohrfeld Forefront 541 Mohrfeld Elluna 741 M A F Elluna 190	Connealy Forefront # TC Ruby 3218 # Alberda Traveler 416 # V D A R Elluna 6153	Dam Production 2 NR 105

BW	WW	Milk	YW	\$EN-4.90	\$W28.76	\$F25.76	\$G30.11	\$B52.63
+0.6	+46	+28	I+85	- Individual Performance -				Projected
Marb	RE	Fat		BW	205	NR	YR	ADG
I+.50	I+.42	I+.025		73	710	102	96	2.41

Heifer bull

46 Krone Automatic 0021

Bull Calved 3/12/10 Reg. 16788425

Mytty In Focus # BPF Automatic B P F Nell 043	S A F Focus of E R # Mytty Countess 906 G M C A Ext 7107 B P F Nell D H D 860	EPDs Sire Dam BW +2.7 +2.8 WW +60 +46 Milk +25 +26 YW +102 +84
Krone Royal 1140 Krone Bonita 5506 Krone Bonita 3312	B/R New Design 036 # Leachman Erica 6267 Leachman Frontline 0543 Black Butte Bonita Ila 714	Dam Production 2 NR 109

BW	WW	Milk	YW	\$EN-4.54	\$W29.17	\$F27.62	\$G27.90	\$B50.01
+2.7	+54	+26	I+90	- Individual Performance -				Projected
Marb	RE	Fat		BW	205	NR	YR	ADG
I+.42	I+.16	I-.006		86	697	107	98	2.47

Recommended for larger heifers

47 BCC Jaf Pioneer 34X

Bull Calved 2/1/10 Reg. 16714455

S A V Final Answer 0035 # S A V Pioneer 7301 S A V Blackbird 5297	Sitz Traveler 8180 # S A V Emulous 8145 Boyd New Day 8005 # S A V Blackbird 1082	EPDs Sire Dam BW +1.8 +5.4 WW +61 +48 Milk +31 +23 YW +111 +82
GDAR SVF Traveler 234D # J A F Eileen Effecta 321 J A F Eileen Effecta 92	Traveler 124 G D A R # G D A R Forever Lady 718 Prodigy 5001 of B C A R J A F Eileen Effecta 76	Dam Production 6 NR 104

BW	WW	Milk	YW	\$EN-8.29	\$W26.88	\$F35.49	\$G27.53	\$B53.49
+3.5	+57	+27	I+99	- Individual Performance -				Projected
Marb	RE	Fat		BW	205	NR	YR	ADG
I+.36	I+.49	I+.010		90	781	105	102	3.62

49 Krone Automatic 0013

Bull Calved 1/28/10 Reg. 16788444

Mytty In Focus # BPF Automatic B P F Nell 043	S A F Focus of E R # Mytty Countess 906 G M C A Ext 7107 B P F Nell D H D 860	EPDs Sire Dam BW +2.7 +0.1 WW +60 +32 Milk +25 +20 YW +102 +68
Krone OT 6400 Krone Miss Maid 807 BT Miss Maid 248H	Boyd On Target 1083 # Indreland Barbara 9008 TC Dividend 963 # BT Miss Maid 99F	Dam Production 1 NR 104

BW	WW	Milk	YW	\$EN0.08	\$W26.99	\$F26.96	\$Gna	\$Bna
+1.8	+48	+22	I+87	- Individual Performance -				Projected
Marb	RE	Fat		BW	205	NR	YR	ADG
na	na	na		80	682	104	100	3.05

Heifer bull

50 BCC Jaf Lookout 42X

Bull Calved 2/3/10 Reg. 16714345

O C C Legend 616L B C Lookout 7024 Gibbet Hill Mignonne E37	O C C Emblazon 854E # O C C Blackbird 632J Papa Equator 2928 # Gibbet Hill Mignonne TR 29	EPDs Sire Dam BW +2.6 +6.0 WW +50 +37 Milk +15 +16 YW +84 +66
V D A R Traveler 556 J A F Blackbird 08 J A F Blackbird Lass 55	Traveler 124 G D A R # V D A R Beauty 228 E A F Northern Hoss Blackbird Rowena 26	Dam Production 7 NR 100

BW	WW	Milk	YW	\$EN9.33	\$W21.80	\$F19.17	\$G15.20	\$B39.28
+3.1	+43	+15	I+77	- Individual Performance -				Projected
Marb	RE	Fat		BW	205	NR	YR	ADG
I+.15	I+.30	I+.022		84	696	93	98	3.05

51 Bar 942 0015

Bull Calved 3/16/10 Reg. 16788447

Ideal 8423 of 1418 0346 Bar 942 of 8423 Miss Rito 942 of 523	Ideal 1418 of 8103 4286 # Ideal 0346 Super X 5189 8107 Royal Rito L 2 523 4 Point 4 of 16	EPDs Sire Dam BW +2.0 +3.9 WW +50 +36 Milk +17 +28 YW +97 +72
Leachman Cascade # Leachman Blackcap 3070 Leachman Blackcap 8043 #	Connealy Frontline # Leachman Blackcap 3053 G D A R Traveler 9161 # Leachman Blackcap 4066	Dam Production 2 NR 112

BW	WW	Milk	YW	\$EN-0.23	\$W22.76	\$F28.71	\$G17.64	\$B42.07
+3.0	+46	+22	I+88	- Individual Performance -				Projected
Marb	RE	Fat		BW	205	NR	YR	ADG
I+.22	I+.06	I+.002		88	703	108	107	3.28

52 BCC Jaf Pendleton 31X

Bull Calved 1/31/10 Reg. + 16709247

S A V Final Answer 0035 # HARB Pendleton 765 J H H A R B Black Lady 375 J H #	Sitz Traveler 8180 # S A V Emulous 8145 H A R B High Plains 975 JH # H A R B Black Lady 073 J H #	EPDs Sire Dam BW +0.2 +2.3 WW +59 +35 Milk +29 +12 YW +107 +74
Leachman Right Time # BT Everelda Entense 58L BT Everelda Entense 251F	N Bar Emulation EXT # Leachman Erica 0025 Beartooth Ice 82D # Sitz Everelda Entense 1905	Dam Production 6 NR 93

BW	WW	Milk	YW	\$EN-0.24	\$W25.66	\$F31.32	\$G9.50	\$B31.05
I+1.3	I+47	I+21	I+91	- Individual Performance -				Projected
Marb	RE	Fat		BW	205	NR	YR	ADG
I+.15	I-.08	I+.033		75	768	ET	ET	3.22

Heifer bull



53 PCC BCC in Focus 315X

Bull Calved 1/25/10 Reg. 16723947

S A F Focus of E R # Mytty In Focus # Mytty Countess 906		S A F Fame # G D A R Forever Lady 246 Sitz Alliance 6595 # Baldrige Countess 357		EPDs Sire Dam BW -1.3 +1.1 WW +54 +43 Milk +25 +26 YW +100 +79	
Connealy Freightliner # Mytty Blackcap U154 Sitz Blackcap 1478		Bon View Bando 598 # Joana Erica of Conanga G D A R Traveler 71 # Sitz Blackcap 1626		Dam Production 1 NR 100	
BW	WW	Milk	YW	\$EN -4.85	\$W 28.72
-0.1	+48	+26	I+91	\$F 30.93	\$G na
Marb	RE	Fat		\$B na	
na	na	na		- Individual Performance -	
				BW	205
				NR	100
				YR	101
				ADG	3.79
				Projected Sale Wt	1351

Heifer bull

55 Krone IM 0019

Bull Calved 1/30/10 Reg. 16788446

Hero 6267 of R R 2418 # H A Image Maker 0415 # H A Rito Blackcap 9038		R R Hero 6267 # R R Everelda Entense 0413 H 96 Rito 2100 7371 H 96 Blackcap 3835		EPDs Sire Dam BW +0.5 +5.1 WW +66 +52 Milk +37 +21 YW +109 +87	
BPF Automatic Krone Royal Lass 816 Krone Royal Lass 6604		Mytty In Focus # B P F Nell 043 M A R Midland Empire 3092 # Krone Royal Lass 1135		Dam Production 1 NR 102	
BW	WW	Milk	YW	\$EN -8.94	\$W 32.30
+2.3	+59	+29	I+95	\$F 30.66	\$G na
Marb	RE	Fat		\$B na	
na	na	na		- Individual Performance -	
				BW	205
				NR	102
				YR	97
				ADG	2.41
				Projected Sale Wt	1028

Heifer bull



56 SCC Moneymaker 117X

Bull Calved 2/24/10 Reg. 16714460

Stevenson Moneymaker R185 OSU Moneymaker 8169 O S U Empress 4123		Boyd On Target 1083 # Stevenson Clova Pride L888 # Northern Improvement 4480 GF # O S U 2928 Empress 4177		EPDs Sire Dam BW +4.0 +1.1 WW +47 +32 Milk +19 +29 YW +91 +65	
Hoff Head of The Class SC534 # BT Juanada Blackbird 87M BT Juanada Blackbird 11J #		Amdahls First Class 12 Hoff Ultress S C 716 TC Dividend 963 # BT Juanada Blackbird 85G		Dam Production 7 NR 103	
BW	WW	Milk	YW	\$EN 0.69	\$W 22.97
+2.7	+41	+24	I+79	\$F 21.82	\$G na
Marb	RE	Fat		\$B na	
na	na	na		- Individual Performance -	
				BW	205
				NR	103
				YR	99
				ADG	2.70
				Projected Sale Wt	1218

Lot 54

54 BCC Jaf Moneymaker 100X

Bull Calved 2/19/10 Reg. 16714462

Stevenson Moneymaker R185 OSU Moneymaker 8169 O S U Empress 4123		Boyd On Target 1083 # Stevenson Clova Pride L888 # Northern Improvement 4480 GF # O S U 2928 Empress 4177		EPDs Sire Dam BW +4.0 +2.1 WW +47 +46 Milk +19 +16 YW +91 +65	
R A 044 Traveler 656 KA R Traveler 109 Ka R EXT 909		G D A R Traveler 044 # W F A Queen 456 N Bar Emulation EXT # Minburn 0309 H W B #		Dam Production 6 NR 104	
BW	WW	Milk	YW	\$EN 6.41	\$W 24.08
+3.0	+45	+18	I+78	\$F 19.38	\$G na
Marb	RE	Fat		\$B na	
na	na	na		- Individual Performance -	
				BW	205
				NR	95
				YR	96
				ADG	2.87
				Projected Sale Wt	1237

57 JAF Final Answer 009

Bull Calved 2/10/10 Reg. 16729407

Sitz Traveler 8180 # S A V Final Answer 0035 # S A V Emulous 8145		G D A R Traveler 71 # Sitz Everelda Entense 1137 Bon View Bando 598 # S A V Sky Emulous 2124		EPDs Sire Dam BW -1.0 +2.2 WW +61 +41 Milk +19 +20 YW +106 +85	
EXAR New Look 2971 # JAF Bes 520 Seldom Rest Maxie		Bon View New Design 1407 # N Bar Primrose 2424 Kruggerand of Donamere 490 # M M C L Lucy 0703		Dam Production 3 NR 101	
BW	WW	Milk	YW	\$EN -0.32	\$W 25.67
+1.6	+51	+19	I+97	\$F 35.82	\$G 27.12
Marb	RE	Fat		\$B 51.78	
I+.40	I+.38	I+.018		- Individual Performance -	
				BW	205
				NR	105
				YR	106
				ADG	3.22
				Projected Sale Wt	1251

58 Nueta Upward 50X

Bull Calved 2/9/10 Reg. + 16831495

Connealy Onward SITZ UPWARD 307R Sitz Henrietta Pride 81M	Connealy Lead On # Altune of Conanga 6104 Sitz Value 7097 # Sitz Henrietta Pride 1370	EPDs Sire Dam BW +2.4 +7.3 WW +70 +39 Milk +43 +27 YW +136 +83
Hoff Westwind S C 070 # Hoff Moriah S C 635 Hoff Miss Sunshine S C 9262	Hoff Great Western S C 456 # Hoff Miss Spade S C 803 S V F Bandolier Hoff Miss Val S C 282	Dam Production 7 NR 104
BW 1+4.9 WW 1+55 Milk 1+35 YW 1+110	\$EN -19.83 \$W 19.22 \$F 47.83 \$G 18.53 \$B 56.35	Projected Sale Wt 1396
Marb 1+.32 RE 1+.31 Fat 1+.022	Individual Performance - BW 92 205 755 NR ET YR ET ADG 3.51	

59 Krone Automatic 0032

Bull Calved 2/6/10 Reg. 16788433

Mytty In Focus # BPF Automatic B P F Nell 043	S A F Focus of E R # Mytty Countess 906 G M C A Ext 7107 B P F Nell D H D 860	EPDs Sire Dam BW +2.7 +3.1 WW +60 +31 Milk +25 +11 YW +102 +63
Leachman Rising Sun Leachman Lass 0043 Leachman Lass 7023	B/R New Design 036 # Leachman Lassie 0007 # Leachman Explorer # Leachman Lass 4001	Dam Production 8 NR 97
BW +3.9 WW +43 Milk +18 YW 1+82	\$EN 5.20 \$W 19.48 \$F 23.97 \$G 21.68 \$B 39.91	Projected Sale Wt 1122
Marb 1+.36 RE 1-.14 Fat 1+.001	Individual Performance - BW 87 205 605 NR 93 YR 97 ADG 3.33	

60 BCC BISMARCK 18X

Bull Calved 1/28/10 Reg. 16702175

G A R Grid Maker # S A V Bismarck 5682 S A V Abigale 0451	G D A R Traveler 044 # G A R Precision 2536 Schoenes Fix It 826 # S A V Abigale 6062	EPDs Sire Dam BW +0.2 +3.4 WW +56 +60 Milk +23 +25 YW +100 +111
M A Broadside 1334-822 JAF VIXON 66U JAF Vixon 53	Bon View New Design 878 # MA Miss Emulous 822 EAR THREE RIVERS # North Fork Vixon 1168	Dam Production 1 NR 109
BW +1.4 WW +60 Milk +24 YW 1+109	\$EN -8.64 \$W 29.59 \$F 44.69 \$G 17.94 \$B 46.81	Projected Sale Wt 1271
Marb 1+.20 RE 1+.28 Fat 1+.017	Individual Performance - BW 82 205 746 NR 109 YR 109 ADG 3.22	

Heifer bull

61 Nueta Shear Force 39X

Bull Calved 2/4/10 Reg. + 16833247

N Bar Prime Time D806 # G T Shear Force G T Siskin 106 #	Gardens Prime Time # N Bar Miss Emulous A404 Plowman 1627 of Millbrae SAR G T Rosalita 509	EPDs Sire Dam BW +2.6 +7.3 WW +51 +39 Milk +23 +27 YW +107 +83
Hoff Westwind S C 070 # Hoff Moriah S C 635 Hoff Miss Sunshine S C 9262	Hoff Great Western S C 456 # Hoff Miss Spade S C 803 S V F Bandolier Hoff Miss Val S C 282	Dam Production 7 NR 104
BW 1+5.0 WW 1+45 Milk 1+25 YW 1+95	\$EN -5.43 \$W 15.77 \$F 36.16 \$G 19.70 \$B 49.22	Projected Sale Wt 1407
Marb 1+.50 RE 1+.07 Fat 1+.050	Individual Performance - BW 118 205 680 NR ET YR ET ADG 3.91	

62 Nueta Danny Boy 38X

Bull Calved 2/4/10 Reg. + 16833218

Connealy Timeline # Connealy Danny Boy # Energy of Conanga 4851	Connealy Dateline # Enchants Fortune Conanga6127 # Hoff Heartland S C 456 # Dividends Envy of Conanga #	EPDs Sire Dam BW +0.4 +7.3 WW +52 +39 Milk +6 +27 YW +93 +83
Hoff Westwind S C 070 # Hoff Moriah S C 635 Hoff Miss Sunshine S C 9262	Hoff Great Western S C 456 # Hoff Miss Spade S C 803 S V F Bandolier Hoff Miss Val S C 282	Dam Production 7 NR 104
BW 1+3.9 WW 1+46 Milk 1+17 YW 1+88	\$EN 4.24 \$W 19.49 \$F 28.71 \$G 21.27 \$B 54.50	Projected Sale Wt 1253
Marb 1+.28 RE 1+.43 Fat 1+.007	Individual Performance - BW 108 205 674 NR ET YR ET ADG 3.16	

63 BCC PIONEER 92X

Bull Calved 2/16/10 Reg. 16702177

S A V Final Answer 0035 # S A V Pioneer 7301 S A V Blackbird 5297	Sitz Traveler 8180 # S A V Emulous 8145 Boyd New Day 8005 # S A V Blackbird 1082	EPDs Sire Dam BW +1.8 +2.4 WW +61 +49 Milk +31 +16 YW +111 +87
Connealy Danny Boy # JAF VIXON 17T North Fork Vixon 1168	Connealy Timeline # Energy of Conanga 4851 S A F Focus of E R # Finks 060 of 899 5522	Dam Production 1 NR 104
BW +1.6 WW +58 Milk +24 YW 1+102	\$EN -6.42 \$W 30.10 \$F 38.18 \$G 26.22 \$B 55.94	Projected Sale Wt 1283
Marb 1+.37 RE 1+.45 Fat 1+.013	Individual Performance - BW 80 205 752 NR 104 YR 104 ADG 3.45	

Heifer bull

64 PCC BCC Pioneer 303X

Bull Calved 1/11/10 Reg. 16720606

S A V Final Answer 0035 # S A V Pioneer 7301 S A V Blackbird 5297	Sitz Traveler 8180 # S A V Emulous 8145 Boyd New Day 8005 # S A V Blackbird 1082	EPDs Sire Dam BW +1.8 +1.7 WW +61 +46 Milk +31 +15 YW +111 +80
O C C Emblazon 854E # Pine Coulee Blackbird T500 Pine Coulee Blackbird R84	D H D Traveler 6807 # Dixie Erica of C H 1019 W C C Special Design L309 # A A R Blackbird 1320	Dam Production 1 NR 100
BW +1.5 WW +54 Milk +23 YW 1+88	\$EN -1.14 \$W 31.71 \$F 25.66 \$G na \$B na	Projected Sale Wt 1216
Marb na RE na Fat na	Individual Performance - BW 78 205 824 NR 100 YR 87 ADG 3.05	

Heifer bull



Lot 61

65 Krone Upward 0002

Bull Calved 2/6/10 Reg. 16791143

Connealy Onward SITZ UPWARD 307R Sitz Henrietta Pride 81M	Connealy Lead On # Altune of Conanga 6104 Sitz Value 7097 # Sitz Henrietta Pride 1370	EPDs Sire Dam BW +2.4 +0.1 WW +70 +35 Milk +43 +22 YW +136 +67
Bon View New Design 878 # BT Forever Lady 12M BT Forever Lady 640J	B/R New Design 036 # Bon View Gammer 85 Homestead Blockbuster 409 # BT Forever Lady 439G	Dam Production 5 NR 94

BW	WW	Milk	YW	\$EN	\$W	\$F	\$G	\$B	\$A	\$92
+1.5	+48	+32	I+102							
Marb	RE	Fat		BW	205	NR	YR	ADG		Projected Sale Wt
I+.31	I+.13	I+.020		84	590	90	102	3.97		1210

Recommended for larger heifers

70 BCC BISMARCK 26X

Bull Calved 1/30/10 Reg. 16703899

G A R Grid Maker # S A V Bismarck 5682 S A V Abigale 0451	G D A R Traveler 044 # G A R Precision 2536 Schoenes Fix It 826 # S A V Abigale 6062	EPDs Sire Dam BW +0.2 +2.1 WW +56 +45 Milk +23 +21 YW +100 +79
BT New Day 121R BCC Ruby 123U M A R R L Ruby 8166 #	Boyd New Day 8005 # BT Everelda Entense 802L V D A R Bando 96 M A R R L Ruby 5720	Dam Production 1 NR 99

BW	WW	Milk	YW	\$EN	\$W	\$F	\$G	\$B	\$A	\$na
+0.8	+50	+22	I+88							
Marb	RE	Fat		BW	205	NR	YR	ADG		Projected Sale Wt
na	na	na		80	676	99	97	2.47		1106

Heifer bull

67 Krone Pioneer 0025

Bull Calved 2/7/10 Reg. 16791027

S A V Final Answer 0035 # S A V Pioneer 7301 S A V Blackbird 5297	Sitz Traveler 8180 # S A V Emulous 8145 Boyd New Day 8005 # S A V Blackbird 1082	EPDs Sire Dam BW +1.8 +0.6 WW +61 +49 Milk +31 +23 YW +111 +88
BPF Automatic Krone Effie 825 Krone Effie 2233	Mytty In Focus # B P F Nell 043 Bon View New Design 1407 # Sitz Blackcap Effie 727 #	Dam Production 1 NR 101

BW	WW	Milk	YW	\$EN	\$W	\$F	\$G	\$na	\$B	\$na
+2.4	+54	+27	I+99							
Marb	RE	Fat		BW	205	NR	YR	ADG		Projected Sale Wt
na	na	na		84	657	101	101	3.33		1092

Heifer bull

71 Krone Skyward 0024

Bull Calved 2/13/10 Reg. 16788441

SITZ UPWARD 307R Rocking R Skyward LS Miss Ideal P274	Connealy Onward Sitz Henrietta Pride 81M BR Midland # EXG Limestone Ideal M086	EPDs Sire Dam BW +2.0 +2.6 WW +62 +41 Milk +30 +15 YW +117 +79
Leachman Diamondback Leachman Blackcap 2057 Leachman Blackcap 7062	Connealy Frontline # Leachman Blackbird 5016 R R Chevis 5414 Leachman Blackcap 2047 #	Dam Production 6 NR 97

BW	WW	Milk	YW	\$EN	\$W	\$F	\$G	\$23.19	\$B	\$51.14
+2.3	+45	+23	I+88							
Marb	RE	Fat		BW	205	NR	YR	ADG		Projected Sale Wt
I+.37	I+.32	I+.024		85	564	86	85	2.64		975

68 BCC Jaf Right Time 80X

Bull Calved 2/14/10 Reg. + 16714185

N Bar Emulation EXT # Leachman Right Time # Leachman Erica 0025	Emulation N Bar 5522 # N Bar Primrose 2424 Tehama Bando 155 # Leachman Erica 8058	EPDs Sire Dam BW +2.2 +5.2 WW +43 +39 Milk +19 +16 YW +81 +63
Skarship Saratoga # J A F Altesse 29 Altesse 814	Pine Drive Big Sky # W A R Elba 43J High Guaran T Altesse 570	Dam Production 5 NR 106

BW	WW	Milk	YW	\$EN	\$W	\$F	\$G	\$6.89	\$B	\$23.31
I+3.7	I+41	I+18	I+72							
Marb	RE	Fat		BW	205	NR	YR	ADG		Projected Sale Wt
I+.04	I-.16	I+.013		94	730	ET	ET	2.47		1166

72 Nueta Shear Force 51X

Bull Calved 2/9/10 Reg. + 16833250

N Bar Prime Time D806 # G T Shear Force G T Siskin 106 #	Gardens Prime Time # N Bar Miss Emulous A404 PLOWMAN 1627 of Millbrae SAR G T Rosalita 509	EPDs Sire Dam BW +2.6 +3.4 WW +51 +29 Milk +23 +16 YW +107 +54
Hoff Bull Durham S C 846 # Hoff Lady Durham S C 540 # Hoff Dallas of S C 766	R&J D F W 1388 # Hoff Valentine S C 856 R&J Dallas 752 # Rito 91 of S C 513	Dam Production 11 NR 100

BW	WW	Milk	YW	\$EN	\$W	\$F	\$G	\$24.12	\$G	\$21.62	\$B	\$46.04
I+3.0	I+40	I+20	I+81									
Marb	RE	Fat		BW	205	NR	YR	ADG		Projected Sale Wt		
I+.50	I-.05	I+.031		95	756	ET	ET	3.33		1417		

69 JAF Final Answer 007

Bull Calved 2/9/10 Reg. 16727820

Sitz Traveler 8180 # S A V Final Answer 0035 # S A V Emulous 8145	G D A R Traveler 71 # Sitz Everelda Entense 1137 Bon View Bando 598 # S A V Sky Emulous 2124	EPDs Sire Dam BW -1.0 +3.1 WW +61 +39 Milk +19 +20 YW +106 +68
J L B Exacto 416 # KA R Exacto 330 Queen 2271 B C B R #	G A R Precision 1680 # Brost Burgess 041 V D A R New Trend 315 # Queen 949 B C B R	Dam Production 4 NR 99

BW	WW	Milk	YW	\$EN	\$W	\$F	\$G	\$24.10	\$B	\$45.94
-0.3	+53	+20	I+91							
Marb	RE	Fat		BW	205	NR	YR	ADG		Projected Sale Wt
I+.28	I+.39	I+.012		76	739	106	105	3.05		1236

Heifer bull



Lot **69**

73 BCC Jaf Pendleton 54X

Bull Calved 2/8/10 Reg. + 16714443

S A V Final Answer 0035 # Sitz Traveler 8180 #
HARB Pendleton 765 JH S A V Emulous 8145
 H A R B Black Lady 375 JH # H A R B High Plains 975 JH #
 H A R B Black Lady 073 JH #

Leachman Right Time # N Bar Emulation EXT #
BT Everelda Entense 58L Leachman Erica 0025
 BT Everelda Entense 251F Beartooth Ice 82D #
 Sitz Everelda Entense 1905

EPDs Sire Dam		
BW	+0.2	+2.3
WW	+59	+35
Milk	+29	+12
YW	+107	+74
Dam Production		
	6 NR 93	

BW	WW	Milk	YW	\$EN	\$W	\$F	\$G	\$B	\$105
+1.3	+47	+21	+91	-0.24	25.66	31.32	9.50	31.05	
- Individual Performance -									
Marb	RE	Fat	BW	205	NR	YR	ADG	Projected Sale Wt	
+1.15	+0.08	+0.033	85	729	ET	ET	3.79	1376	

Heifer bull

76 Krone Automatic 0018

Bull Calved 2/20/10 Reg. 16788428

Mytty In Focus # S A F Focus of E R #
BPF Automatic Mytty Countess 906
 B P F Nell 043 G M C A Ext 7107
 B P F Nell D H D 860

Connealy Dateline # D H D Traveler 6807 #
Leachman Blackcap 1014 Eila Eila of Conanga #
 Leachman Blackcap 9005 R A Beartooth Aberdeen #
 Leachman Blackcap 7005 Leachman Blackcap 7005

EPDs Sire Dam		
BW	+2.7	+2.5
WW	+60	+39
Milk	+25	+17
YW	+102	+74
Dam Production		
	7 NR 100	

BW	WW	Milk	YW	\$EN	\$W	\$F	\$G	\$B	\$105
+3.7	+47	+21	+88	0.68	21.73	28.33	22.46	44.13	
- Individual Performance -									
Marb	RE	Fat	BW	205	NR	YR	ADG	Projected Sale Wt	
+1.28	+0.09	+0.008	92	622	95	100	3.51	1151	

77 BCC UPWARD 63X

Bull Calved 2/10/10 Reg. 16705553

Connealy Onward Connealy Lead On #
SITZ UPWARD 307R Altuye of Conanga 6104
 Sitz Henrietta Pride 81M Sitz Value 7097 #
 Sitz Henrietta Pride 1370

Hyline Right Way 781 # Hyline Right Time 338 #
SCC Queen Mother 335 Hyline Ellen 86
 BT Queen Mother 2D R A Beartooth Aberdeen
 N Bar Queen Mother 6079

EPDs Sire Dam		
BW	+2.4	+4.1
WW	+70	+41
Milk	+43	+14
YW	+136	+70
Dam Production		
	3 NR 100	

BW	WW	Milk	YW	\$EN	\$W	\$F	\$G	\$B	\$105
+3.8	+57	+29	+105	-12.08	24.58	41.70	21.22	57.06	
- Individual Performance -									
Marb	RE	Fat	BW	205	NR	YR	ADG	Projected Sale Wt	
+1.34	+0.34	+0.014	90	773	106	104	3.28	1319	



Lot 74

74 BCC TRADEMARK 67X

Bull Calved 2/11/10 Reg. 16822858

B C Lookout 7024 O C C Legend 616L
Limestone Trademark T336 Gibbet Hill Mignonne E37
 HCC Blackcap 4210 # W C C Precision E161 J239
 D V A R Precision 2104 994

Bairds Really Windy 23 A A R Really Windy 1205 #
Felton 517 Fern 835 Bairds Nellie K115
 Far 8174 Rosemary 517 Tomwall D V Commodore 2143
 8348 Far Barbie 8174

EPDs Sire Dam		
BW	+1.9	+2.7
WW	+51	+43
Milk	+19	+21
YW	+83	+71
Dam Production		
	3 NR 103	

BW	WW	Milk	YW	\$EN	\$W	\$F	\$G	\$B	\$105
+1.1	+48	+20	+76	5.23	30.90	16.40	18.86	39.72	
- Individual Performance -									
Marb	RE	Fat	BW	205	NR	YR	ADG	Projected Sale Wt	
+1.26	+0.13	+0.017	81	717	99	95	2.93	1210	

Heifer bull

79 Nueta Pioneer 24X

Bull Calved 1/29/10 Reg. 16721180

S A V Final Answer 0035 # Sitz Traveler 8180 #
S A V Pioneer 7301 S A V Emulous 8145
 S A V Blackbird 5297 Boyd New Day 8005 #
 S A V Blackbird 1082

N Bar Emulation EXT # Emulation N Bar 5522 #
JAF Everelda Entense 43U N Bar Primrose 2424
 BT Everelda Entense 53K Prototype 5102 E A R
 BT Everelda Entense 57D

EPDs Sire Dam		
BW	+1.8	+1.4
WW	+61	+38
Milk	+31	+27
YW	+111	+73
Dam Production		
	1 NR 105	

BW	WW	Milk	YW	\$EN	\$W	\$F	\$G	\$B	\$105
+1.1	+54	+29	+96	-9.25	30.61	33.62	20.41	47.99	
- Individual Performance -									
Marb	RE	Fat	BW	205	NR	YR	ADG	Projected Sale Wt	
+1.37	+0.33	+0.049	80	748	105	103	3.16	1283	

Heifer bull

75 Krone Automatic 0012

Bull Calved 2/16/10 Reg. 16788437

Mytty In Focus # S A F Focus of E R #
BPF Automatic Mytty Countess 906
 B P F Nell 043 G M C A Ext 7107
 B P F Nell D H D 860

Sitz Heritage 10709 Sitz Alliance 6595 #
Krone Barbara 4423 Sitz Emma E 707
 Indreland Barbara 9008 B/R New Design 036 #
 Indreland Ext 7020 #

EPDs Sire Dam		
BW	+2.7	+1.4
WW	+60	+42
Milk	+25	+22
YW	+102	+81
Dam Production		
	5 NR 102	

BW	WW	Milk	YW	\$EN	\$W	\$F	\$G	\$B	\$105
+2.1	+51	+24	+94	-3.92	26.74	32.78	24.19	47.41	
- Individual Performance -									
Marb	RE	Fat	BW	205	NR	YR	ADG	Projected Sale Wt	
+1.38	+0.15	+0.013	87	662	101	105	4.08	1236	

80 BCC Jaf Trademark 147X

Bull Calved 3/6/10 Reg. 16709246

B C Lookout 7024 O C C Legend 616L
Limestone Trademark T336 Gibbet Hill Mignonne E37
 HCC Blackcap 4210 # W C C Precision E161 J239
 D V A R Precision 2104 994

Woodhill Foresight # Papa Forte 1921 #
JAF Everelda Entense 83S Bon View Gammer 85
 BT Everelda Entense 526M Leachman Right Time #
 Sitz Everelda Entense 1905 Sitz Everelda Entense 1905

EPDs Sire Dam		
BW	+1.9	+2.5
WW	+51	+52
Milk	+19	+28
YW	+83	+92
Dam Production		
	2 NR 93	

BW	WW	Milk	YW	\$EN	\$W	\$F	\$G	\$B	\$105
+1.8	+52	+23	+87	-0.83	30.02	25.44	na	na	
- Individual Performance -									
Marb	RE	Fat	BW	205	NR	YR	ADG	Projected Sale Wt	
na	na	na	87	717	105	99	3.10	1179	



Lot
81

81 Nueta Upward 52X

Bull Calved 2/10/10 Reg. + 16831496

		EPDs		Sire		Dam	
Connealy Onward		Connealy Lead On #		Sitz Traveler 8180 #		S A V Final Answer 0035 #	
SITZ UPWARD 307R		Altune of Conanga 6104		S A V Emulous 8145		S A V Pioneer 7301	
Sitz Henrietta Pride 81M		Sitz Value 7097 #		Boyd New Day 8005 #		S A V Blackbird 5297	
		Sitz Henrietta Pride 1370		S A V Blackbird 1082			
Hoff Westwind S C 070 #		Hoff Great Western S C 456 #		C H Stacker 7040 #		Krugerrand of Donamere 490 #	
Hoff Moriah S C 635		Hoff Miss Spade S C 803		Donamere Bachel Beauty 288		J A F Blackbird Rowena 05	
Hoff Miss Sunshine S C 9262		S V F Bandolier		E A F UB40		J A F Blackbird Rowena 623	
		Hoff Miss Val S C 282		Blackbird Rowena 015			
		Dam Production				Dam Production	
		7 NR 104				7 NR 99	

BW	WW	Milk	YW	\$EN	\$W	\$F	\$G	\$B	\$B35
I+4.9	I+55	I+35	I+110	-19.83	19.22	47.83	18.53	56.35	
- Individual Performance -									
Marb	RE	Fat	BW	205	NR	YR	ADG	Projected Sale Wt	
I+.32	I+.31	I+.022	115	634	ET	ET	3.56	1279	

82 BCC Jaf Upward 131X

Bull Calved 3/1/10 Reg. 16714407

		EPDs		Sire		Dam	
Connealy Onward		Connealy Lead On #		Sitz Traveler 8180 #		S A F Final Answer 0035 #	
SITZ UPWARD 307R		Altune of Conanga 6104		S A V Emulous 8145		S A V Pioneer 7301	
Sitz Henrietta Pride 81M		Sitz Value 7097 #		Boyd New Day 8005 #		S A V Blackbird 5297	
		Sitz Henrietta Pride 1370		S A V Blackbird 1082			
Boyd On Target 1083 #		S A F 598 Bando 5175 #		C H Stacker 7040 #		Krugerrand of Donamere 490 #	
JAF Everelda Entense 80S		Boyd Forever Lady 7095		Donamere Bachel Beauty 288		J A F Blackbird Rowena 05	
BT Everelda Entense 526M		Leachman Right Time #		E A F UB40		J A F Blackbird Rowena 623	
		Sitz Everelda Entense 1905		Blackbird Rowena 015			
		Dam Production				Dam Production	
		2 NR 106				7 NR 99	

BW	WW	Milk	YW	\$EN	\$W	\$F	\$G	\$B	\$B na
+3.6	+59	+34	I+118	-21.13	22.57	54.84	na	na	
- Individual Performance -									
Marb	RE	Fat	BW	205	NR	YR	ADG	Projected Sale Wt	
na	na	na	98	717	105	111	3.79	1361	

83 PCC BCC Thunder 307X

Bull Calved 1/15/10 Reg. 16720623

		EPDs		Sire		Dam	
Baldrige Kaboom K243 KCP		Jauer 353 Traveler 589 27 #		Sitz Traveler 8180 #		S A F Focus of E R #	
Connealy Thunder		Pleasant of Conanga 736		Sitz Barabamere Jet 2698 #		G D A R Forever Lady 246	
Parka of Conanga 241 #		Bon View Bando 598 #		Paramont Ambush 2172 #		Sitz Alliance 6595 #	
		Partina of Conanga 6237		Circle S Eisa Erica 475		Baldrige Countess 357	
Sitz Alliance 6595 #		Sitz Traveler 8180 #		C H Stacker 7040 #		Krugerrand of Donamere 490 #	
Pine Coulee Eisa Erica U13		Sitz Barabamere Jet 2698 #		Donamere Bachel Beauty 288		Mytty In Focus #	
Circle S Eisa Erica 6078		Paramont Ambush 2172 #		E A F UB40		Mytty Countess 906	
		Circle S Eisa Erica 475		Blackbird Rowena 015			
		Dam Production				Dam Production	
		1 NR 95				1 NR 95	

BW	WW	Milk	YW	\$EN	\$W	\$F	\$G	\$B	\$B na
+1.3	+42	+27	I+83	-3.34	25.68	52.32	na	na	
- Individual Performance -									
Marb	RE	Fat	BW	205	NR	YR	ADG	Projected Sale Wt	
na	na	na	74	757	95	97	2.93	1125	

Heifer bull

84 BCC Jaf Pioneer 74X

Bull Calved 2/12/10 Reg. 16714454

		EPDs		Sire		Dam	
S A V Final Answer 0035 #		Sitz Traveler 8180 #		S A V Final Answer 0035 #		S A V Pioneer 7301	
S A V Pioneer 7301		S A V Emulous 8145		Boyd New Day 8005 #		S A V Blackbird 5297	
S A V Blackbird 5297		S A V Blackbird 1082		C H Stacker 7040 #		Krugerrand of Donamere 490 #	
		Donamere Bachel Beauty 288		E A F UB40		J A F Blackbird Rowena 05	
J A F Blackbird Rowena 05		Blackbird Rowena 015					
J A F Blackbird Rowena 623							
		Dam Production				Dam Production	
		7 NR 99				7 NR 99	

BW	WW	Milk	YW	\$EN	\$W	\$F	\$G	\$B	\$B 87
+2.4	+46	+21	I+88	0.68	23.80	28.71	26.44	50.87	
- Individual Performance -									
Marb	RE	Fat	BW	205	NR	YR	ADG	Projected Sale Wt	
I+.29	I+.49	I-.004	87	698	93	93	2.99	1218	

85 Krone Skyward 0029

Bull Calved 3/3/10 Reg. 16788439

		EPDs		Sire		Dam	
SITZ UPWARD 307R		Connealy Onward		Sitz Traveler 8180 #		S A V Final Answer 0035 #	
Rocking R Skyward		Sitz Henrietta Pride 81M		S A V Emulous 8145		S A V Pioneer 7301	
LS Miss Ideal P274		BR Midland #		Boyd New Day 8005 #		S A V Blackbird 5297	
		EXG Limestone Ideal M086		S A V Blackbird 1082			
J R Ambush 0151		High Valley 4C6 Ambush #		C H Stacker 7040 #		Krugerrand of Donamere 490 #	
Wards Orpha 316		G G Della 7263		Donamere Bachel Beauty 288		J A F Blackbird Rowena 05	
Wards Orpha 1115 #		J R Ambush 0151		E A F UB40		J A F Blackbird Rowena 623	
		Wards Orpha 402		Blackbird Rowena 015			
		Dam Production				Dam Production	
		5 NR 106				7 NR 99	

BW	WW	Milk	YW	\$EN	\$W	\$F	\$G	\$B	\$B 87
-0.1	+51	+30	I+98	-10.84	29.15	36.85	23.62	53.73	
- Individual Performance -									
Marb	RE	Fat	BW	205	NR	YR	ADG	Projected Sale Wt	
I+.39	I+.36	I+.029	78	704	108	111	3.39	1220	

Heifer bull

86 BCC Jaf Upward 36X

Bull Calved 2/1/10 Reg. 16714406

		EPDs		Sire		Dam	
Connealy Onward		Connealy Lead On #		Sitz Traveler 8180 #		S A F Focus of E R #	
SITZ UPWARD 307R		Altune of Conanga 6104		S A V Emulous 8145		S A V Pioneer 7301	
Sitz Henrietta Pride 81M		Sitz Value 7097 #		Boyd New Day 8005 #		S A V Blackbird 5297	
		Sitz Henrietta Pride 1370		S A V Blackbird 1082			
N Bar Emulation EXT #		Emulation N Bar 5522 #		C H Stacker 7040 #		Krugerrand of Donamere 490 #	
JAF Everelda Entense 14U		N Bar Primrose 2424		Donamere Bachel Beauty 288		Mytty In Focus #	
BT Everelda Entense 53K		Prototype 5102 E A R		E A F UB40		Mytty Countess 906	
		BT Everelda Entense 57D		Blackbird Rowena 015			
		Dam Production				Dam Production	
		1 NR 99				1 NR 99	

BW	WW	Milk	YW	\$EN	\$W	\$F	\$G	\$B	\$B 87
+3.1	+53	+33	I+101	-14.72	24.90	39.15	15.97	49.34	
- Individual Performance -									
Marb	RE	Fat	BW	205	NR	YR	ADG	Projected Sale Wt	
I+.29	I+.24	I+.036	87	740	99	96	3.74	1253	

87 PCC BCC in Focus 312X

Bull Calved 1/22/10 Reg. 16723948

		EPDs		Sire		Dam	
S A F Focus of E R #		S A F Fame #		Sitz Traveler 8180 #		S A F Focus of E R #	
Mytty In Focus #		G D A R Forever Lady 246		S A V Emulous 8145		S A V Pioneer 7301	
Mytty Countess 906		Sitz Alliance 6595 #		Boyd New Day 8005 #		S A V Blackbird 5297	
		Baldrige Countess 357		S A V Blackbird 1082			
Sitz New Design 458N		Bon View New Design 1407 #		C H Stacker 7040 #		Krugerrand of Donamere 490 #	
Mytty Flossie U331		Sitz Ellunas Elite 3308		Donamere Bachel Beauty 288		Mytty In Focus #	
Mytty Flossie R176		Bon View Bando 598 #		E A F UB40		Mytty Countess 906	
		Baldrige Flossie 367		Blackbird Rowena 015			
		Dam Production				Dam Production	
		1 NR 95				1 NR 95	

BW	WW	Milk	YW	\$EN	\$W	\$F	\$G	\$B	\$B 50.51
+0.9	+48	+27	I+93	-6.41	27.29	32.94	27.85	50.51	
- Individual Performance -									
Marb	RE	Fat	BW	205	NR	YR	ADG	Projected Sale Wt	
I+.58	I-.05	I+.011	72	755	95	96	2.36	1070	

Heifer bull

88**Nueta Pioneer 55X**

Bull		Calved 2/8/10		Reg. 16721187								
G A R Grid Maker #		G D A R Traveler 044 #		EPDs Sire Dam								
S A V Bismarck 5682		G A R Precision 2536		BW +0.2 +4.7								
S A V Abigale 0451		Schoenes Fix It 826 #		WW +56 +47								
MF Destroyer 093		S A V Abigale 6062		Milk +23 +27								
Nueta Miss Designer 827		Exar Sudden Impact 1537		YW +100 +86								
Hoff Miss Designer S C 862		M F Cherry 115		Dam Production								
		B/R New Design 036 #		1 NR 91								
		Hoff Butterscotch S C 564 #										
BW	WW	Milk	YW	\$EN-4.54	\$W 24.78	\$F 32.55	\$G 23.01	\$B 48.99				
+2.6	+49	+25	I+93	- Individual Performance -						Projected		
Marb	RE	Fat		BW	205	NR	YR	ADG	Sale Wt			
I+.21	I+.44	I-.009		85	648	91	98	3.51	1226			

Recommended for larger heifers

Lot **90****90****BCC PC Upward 67X**

Bull		Calved 2/5/10		Reg. 16704503								
Connealy Onward		Connealy Lead On #		EPDs Sire Dam								
SITZ UPWARD 307R		Altune of Conanga 6104		BW +2.4 +3.4								
Sitz Henrietta Pride 81M		Sitz Value 7097 #		WW +70 +41								
Sitz Alliance 6595 #		Sitz Henrietta Pride 1370		Milk +43 +19								
MYTTY PRIDE T214		Sitz Traveler 8180 #		YW +136 +77								
Baldrige Pride 227		Sitz Barbaramere Jet 2698 #		Dam Production								
		Bon View Emulation Ext 473 #		2 NR 96								
		Pride of R R 1428										
BW	WW	Milk	YW	\$EN-15.29	\$W 24.80	\$F 45.93	\$G 16.49	\$B 51.24				
+3.2	+57	+31	I+109	- Individual Performance -						Projected		
Marb	RE	Fat		BW	205	NR	YR	ADG	Sale Wt			
I+.32	I+.14	I+.030		88	732	102	105	3.22	1301			

92**Nueta Danny Boy 43X**

Bull		Calved 2/5/10		Reg. + 16833220								
Connealy Timeline #		Connealy Dateline #		EPDs Sire Dam								
Connealy Danny Boy #		Enchant's Fortune Conanga 6127 #		BW +0.4 +7.3								
Energy of Conanga 4851		Hoff Heartland S C 456 #		WW +52 +39								
Hoff Westwind S C 070 #		Dividends Envy of Conanga #		Milk +6 +27								
Hoff Moriah S C 635		Hoff Great Western S C 456 #		YW +93 +83								
Hoff Miss Sunshine S C 9262		Hoff Miss Spade S C 803		Dam Production								
		S V F Bandler		7 NR 104								
		Hoff Miss Val S C 282										
BW	WW	Milk	YW	\$EN 4.24	\$W 19.49	\$F 28.71	\$G 21.27	\$B 54.50				
I+3.9	I+46	I+17	I+88	- Individual Performance -						Projected		
Marb	RE	Fat		BW	205	NR	YR	ADG	Sale Wt			
I+.28	I+.43	I+.007		96	656	ET	ET	2.93	1195			

93**BCC BISMARCK 30X**

Bull		Calved 1/31/10		Reg. 16702176								
G A R Grid Maker #		G D A R Traveler 044 #		EPDs Sire Dam								
S A V Bismarck 5682		G A R Precision 2536		BW +0.2 +1.7								
S A V Abigale 0451		Schoenes Fix It 826 #		WW +56 +54								
BT New Day 121R		S A V Abigale 6062		Milk +23 +29								
JAF MS WITCH 93U		Boyd New Day 8005 #		YW +100 +93								
BT MS Witch 370P #		BT Everelda Entense 802L		Dam Production								
		Sitz Alliance 6595 #		1 NR 108								
		BT MS Witch 116L										
BW	WW	Milk	YW	\$EN-6.72	\$W 32.56	\$F 33.46	\$G 19.51	\$B 41.40				
+0.5	+57	+26	I+97	- Individual Performance -						Projected		
Marb	RE	Fat		BW	205	NR	YR	ADG	Sale Wt			
I+.18	I+.33	I+.010		77	737	108	104	2.64	1185			

Heifer bull

94**Nueta Bob 37X**

Bull		Calved 2/3/10		Reg. + 16835050								
Hoff Insignia 697 224		Hoff Limited Edition S C 594 #		EPDs Sire Dam								
Salt Creek Bob 7003		Hoff Sunshine S C 3356		BW +2.6 +7.3								
Hoff Blackbird S C 244 939		Hoff Head of The Class SC534 #		WW +66 +39								
Hoff Westwind S C 070 #		Hoff Trendy S C 779		Milk +20 +27								
Hoff Moriah S C 635		Hoff Great Western S C 456 #		YW +111 +83								
Hoff Miss Sunshine S C 9262		Hoff Miss Spade S C 803		Dam Production								
		S V F Bandler		7 NR 104								
		Hoff Miss Val S C 282										
BW	WW	Milk	YW	\$EN-5.21	\$W 20.52	\$F 35.03	\$G 9.49	\$B 43.02				
I+5.0	I+53	I+24	I+97	- Individual Performance -						Projected		
Marb	RE	Fat		BW	205	NR	YR	ADG	Sale Wt			
I+.18	I+.21	I+.042		108	600	ET	ET	3.22	1216			

95**Nueta Cortachy Boy 65X**

Bull		Calved 2/10/10		Reg. + 16721035								
Ashley Euler		Eroco of Bankhead		EPDs Sire Dam								
Dunlouse Cortachy Boy D137		Ashley Eulona		BW +1.4 +3.4								
Champagne Cherry Bee B117		Ashley Elmighty		WW +10 +29								
Hoff Bull Durham S C 846 #		Cherry Bee W9 of Champagne		Milk -4 +16								
Hoff Lady Durham S C 540 #		R&J D F W 1388 #		YW +4 +54								
Hoff Dallas of S C 766		Hoff Valentine S C 856		Dam Production								
		R&J Dallas 752 #		11 NR 100								
		Rito 91 of S C 513										
BW	WW	Milk	YW	\$EN 31.12	\$W 16.81	\$F -14.51	\$G 21.12	\$B 29.52				
I+2.4	I+20	I+6	I+29	- Individual Performance -						Projected		
Marb	RE	Fat		BW	205	NR	YR	ADG	Sale Wt			
I+.25	I+.06	I+.003		84	615	ET	ET	2.24	999			

96**Nueta Bob 44X**

Bull		Calved 2/6/10		Reg. + 16835051								
Hoff Insignia 697 224		Hoff Limited Edition S C 594 #		EPDs Sire Dam								
Salt Creek Bob 7003		Hoff Sunshine S C 3356		BW +2.6 +3.4								
Hoff Blackbird S C 244 939		Hoff Head of The Class SC534 #		WW +66 +29								
Hoff Bull Durham S C 846 #		Hoff Trendy S C 779		Milk +20 +16								
Hoff Lady Durham S C 540 #		R&J D F W 1388 #		YW +111 +54								
Hoff Dallas of S C 766		Hoff Valentine S C 856		Dam Production								
		R&J Dallas 752 #		11 NR 100								
		Rito 91 of S C 513										
BW	WW	Milk	YW	\$EN 4.53	\$W 24.33	\$F 23.06	\$G 11.88	\$B 41.30				
I+3.0	I+48	I+18	I+83	- Individual Performance -						Projected		
Marb	RE	Fat		BW	205	NR	YR	ADG	Sale Wt			
I+.19	I+.09	I+.023		108	636	ET	ET	2.41	1123			

97 BCC Jaf Upward 46X

Bull Calved 2/5/10 Reg. 16714408
 Connealy Onward Connealy Lead On #
SITZ UPWARD 307R Altune of Conanga 6104
 Sitz Henrietta Pride 81M Sitz Value 7097 #
 Sitz Henrietta Pride 1370
 Mytty In Focus # S A F Focus of E R #
FV Elsie T425 Mytty Countess 906
 FV Elsie P279 FV Precision 1497
 FV Elsie 0066

EPDs	Sire	Dam
BW	+2.4	+0.3
WW	+70	+49
Milk	+43	+25
YW	+136	+86
Dam Production		
	1	NR 106

BW	WW	Milk	YW	\$EN	\$W	\$F	\$G	\$B
+2.7	+62	+34	I+115	-20.17	27.50	50.29	na	na
- Individual Performance -								
Marb	RE	Fat	BW	205	NR	YR	ADG	Projected Sale Wt
na	na	na	89	790	106	107	3.74	1378

100 Nueta Shear Force 48X

Bull Calved 2/7/10 Reg. + 16833249
 N Bar Prime Time D806 # Gardens Prime Time #
G T Shear Force N Bar Miss Emulous A404
 G T Siskin 106 # Plowman 1627 of Millbrae SAR
 G T Rosalita 509
 Hoff Bull Durham S C 846 # R&J D F W 1388 #
Hoff Lady Durham S C 540 # Hoff Valentine S C 856
 Hoff Dallas of S C 766 R&J Dallas 752 #
 Rito 91 of S C 513

EPDs	Sire	Dam
BW	+2.6	+3.4
WW	+51	+29
Milk	+23	+16
YW	+107	+54
Dam Production		
	11	NR 100

BW	WW	Milk	YW	\$EN	\$W	\$F	\$G	\$B
I+3.0	I+40	I+20	I+81	8.80	25.21	24.12	21.62	46.04
- Individual Performance -								
Marb	RE	Fat	BW	205	NR	YR	ADG	Projected Sale Wt
I+.50	I-.05	I+.031	89	627	ET	ET	3.22	1206



Lot **98**

98 BCC Jaf Upward 49X

Bull Calved 2/6/10 Reg. 16714412
 Connealy Onward Connealy Lead On #
SITZ UPWARD 307R Altune of Conanga 6104
 Sitz Henrietta Pride 81M Sitz Value 7097 #
 Sitz Henrietta Pride 1370
 W C C Special Design L309 # Bon View New Design 878 #
BT Fern 226P N Bar Primrose 2424
 BT Fern 187M Sitz Alliance 8199
 BT Fern 524J

EPDs	Sire	Dam
BW	+2.4	+2.1
WW	+70	+49
Milk	+43	+19
YW	+136	+94
Dam Production		
	5	NR 96

BW	WW	Milk	YW	\$EN	\$W	\$F	\$G	\$B
+2.1	+57	+31	I+108	-14.97	27.43	44.86	19.99	54.18
- Individual Performance -								
Marb	RE	Fat	BW	205	NR	YR	ADG	Projected Sale Wt
I+.36	I+.18	I+.022	86	693	93	91	3.10	1219

101 BCC Jaf Reachout 87X

Bull Calved 2/15/10 Reg. 16715685
 Connealy Reflection Bon View New Design 878 #
MCATL Reachout 836 Happy Grill of Conanga 6260
 MA Lady Barbara 453 TC Freedom 104 #
 Lady Barbara 348 M M #
 Brooks Premium 910 Brooks Premium 302 #
North Fork Beauty 1154 Princess 7186 B C B R
 Beauty 925 B C A R V D A R Lucys Boy #
 S V F Beauty 42B

EPDs	Sire	Dam
BW	+3.3	+0.3
WW	+61	+26
Milk	+32	+27
YW	+99	+65
Dam Production		
	6	NR 100

BW	WW	Milk	YW	\$EN	\$W	\$F	\$G	\$B
+0.7	+39	+29	I+69	-1.03	28.57	13.15	19.23	35.42
- Individual Performance -								
Marb	RE	Fat	BW	205	NR	YR	ADG	Projected Sale Wt
I+.34	I-.03	I+.027	79	664	89	80	1.72	1001

Heifer bull

102 BCC Jaf Right Time 120X

Bull Calved 2/25/10 Reg. + 16714188
 N Bar Emulation EXT # Emulation N Bar 5522 #
Leachman Right Time # N Bar Primrose 2424
 Leachman Erica 0025 Tehama Bando 155 #
 Leachman Erica 8058
 Skarship Saratoga # Pine Drive Big Sky #
J A F Altesse 29 W A R Elba 43J
 Altesse 814 High Guarant T
 Altesse 570

EPDs	Sire	Dam
BW	+2.2	+5.2
WW	+43	+39
Milk	+19	+16
YW	+81	+63
Dam Production		
	5	NR 106

BW	WW	Milk	YW	\$EN	\$W	\$F	\$G	\$B
I+3.7	I+41	I+18	I+72	8.22	21.50	15.20	6.89	23.31
- Individual Performance -								
Marb	RE	Fat	BW	205	NR	YR	ADG	Projected Sale Wt
I+.04	I-.16	I+.013	89	686	ET	ET	2.70	1108

99 Krone Skyward 0031

Bull Calved 2/23/10 Reg. 16788434
 SITZ UPWARD 307R Connealy Onward
Rocking R Skyward Sitz Henrietta Pride 81M
 LS Miss Ideal P274 BR Midland #
 EXG Limestone Ideal M086
 Leachman Rising Sun B/R New Design 036 #
Leachman Blackcap 1092 Leachman Lassie 0007 #
 Leachman Blackcap 6014 D H D Traveler 6807 #
 Leachman Blackcap 4060

EPDs	Sire	Dam
BW	+2.0	+1.8
WW	+62	+30
Milk	+30	+13
YW	+117	+64
Dam Production		
	8	NR 96

BW	WW	Milk	YW	\$EN	\$W	\$F	\$G	\$B
+2.7	+44	+21	I+88	0.68	21.74	29.48	23.27	47.89
- Individual Performance -								
Marb	RE	Fat	BW	205	NR	YR	ADG	Projected Sale Wt
I+.42	I+.08	I+.019	88	598	92	94	3.22	1071

103 BCC Jaf Pendleton 52X

Bull Calved 2/8/10 Reg. + 16714442
 S A V Final Answer 0035 # Sitz Traveler 8180 #
HARB Pendleton 765 J H S A V Emulous 8145
 H A R B Black Lady 375 J H # H A R B High Plains 975 JH #
 H A R B Black Lady 073 J H #
 Leachman Right Time # N Bar Emulation EXT #
BT Everelda Entense 58L Leachman Erica 0025
 BT Everelda Entense 251F Beartooth Ice 82D #
 Sitz Everelda Entense 1905

EPDs	Sire	Dam
BW	+0.2	+2.3
WW	+59	+35
Milk	+29	+12
YW	+107	+74
Dam Production		
	6	NR 93

BW	WW	Milk	YW	\$EN	\$W	\$F	\$G	\$B
I+1.3	I+47	I+21	I+91	-0.24	25.66	31.32	9.50	31.05
- Individual Performance -								
Marb	RE	Fat	BW	205	NR	YR	ADG	Projected Sale Wt
I+.15	I-.08	I+.033	79	621	ET	ET	3.39	1260

Heifer bull



Lot
104

107 Nueta Pioneer 58X

Bull Calved 2/9/10 Reg. 16721179

<p>S A V Final Answer 0035 # S A V Pioneer 7301 S A V Blackbird 5297</p> <p>Hoff Investor S C 929 Nueta Barbara 810 Hoff Barbara S C 8326 1115</p>	<p>Sitz Traveler 8180 # S A V Emulous 8145 Boyd New Day 8005 # S A V Blackbird 1082</p> <p>TC Stockman 365 # Hoff Miss Renovation S C 856 # Hoff Axehandle S C 300 19 Hoff Moriah S C 493</p>	<p>EPDs Sire Dam</p> <p>BW +1.8 +3.8 WW +61 +42 Milk +31 +20 YW +111 +78</p> <p>Dam Production 1 NR 96</p>
--	---	--

BW	WW	Milk	YW	\$EN	\$W	\$F	\$G	\$B	\$A
+3.8	+52	+25	I+93	-4.54	24.31	31.38	27.38	56.35	
- Individual Performance -									
Marb	RE	Fat	BW	205	NR	YR	ADG	Projected Sale Wt	
I+.37	I+.37	I.009	89	686	96	93	3.10	1149	

108 Krone Bar 942 0010

Bull Calved 3/21/10 Reg. 16788426

<p>Ideal 8423 of 1418 0346 Bar 942 of 8423 Miss Rito 942 of 523</p> <p>BPF Automatic Krone Maiden 724 Wards Maiden 125 #</p>	<p>Ideal 1418 of 8103 4286 # Ideal 0346 Super X 5189 8107 Royal Rito L 2 523 4 Point 4 of 16</p> <p>Mytty In Focus # B P F Nell 043 Connealy Freightliner # Wards 1 Maiden 779</p>	<p>EPDs Sire Dam</p> <p>BW +2.0 +2.1 WW +50 +49 Milk +17 +23 YW +97 +86</p> <p>Dam Production 1 NR 101</p>
--	--	--

BW	WW	Milk	YW	\$EN	\$W	\$F	\$G	\$B	\$A
+2.4	+50	+20	I+95	-0.59	24.21	34.18	na	na	
- Individual Performance -									
Marb	RE	Fat	BW	205	NR	YR	ADG	Projected Sale Wt	
na	na	na	84	659	101	108	3.22	1056	

Recommended for larger heifers

109 Krone Automatic 0011

Bull Calved 3/21/10 Reg. 16788435

<p>Mytty In Focus # BPF Automatic B P F Nell 043</p> <p>Leachman Rising Sun Leachman Blackcap 3234 Leachman Blackcap 6260</p>	<p>S A F Focus of E R # Mytty Countess 906 G M C A Ext 7107 B P F Nell D H D 860</p> <p>B/R New Design 036 # Leachman Lassie 0007 # TC Dividend 963 # Leachman Blackcap 9006</p>	<p>EPDs Sire Dam</p> <p>BW +2.7 +3.7 WW +60 +30 Milk +25 +17 YW +102 +54</p> <p>Dam Production 5 NR 98</p>
---	--	--

BW	WW	Milk	YW	\$EN	\$W	\$F	\$G	\$B	\$A
+3.3	+43	+21	I+73	5.24	24.30	15.41	24.23	38.12	
- Individual Performance -									
Marb	RE	Fat	BW	205	NR	YR	ADG	Projected Sale Wt	
I+.35	I-.09	I-.012	87	611	94	90	2.07	875	

111 Kronw Skyward 0006

Bull Calved 3/8/10 Reg. 16788436

<p>SITZ UPWARD 307R Rocking R Skyward LS Miss Ideal P274</p> <p>Bon View New Design 878 # Leachman Lass 3059 Leachman Lass 9059</p>	<p>Connealy Onward Sitz Henrietta Pride 81M BR Midland # EXG Limestone Ideal M086</p> <p>B/R New Design 036 # Bon View Gammer 85 Leachman Right Time # Leachman Lass 5029</p>	<p>EPDs Sire Dam</p> <p>BW +2.0 -0.9 WW +62 +33 Milk +30 +18 YW +117 +64</p> <p>Dam Production 3 NR 94</p>
---	---	--

BW	WW	Milk	YW	\$EN	\$W	\$F	\$G	\$B	\$A
-1.1	+46	+24	I+84	-0.84	30.01	24.78	24.50	46.78	
- Individual Performance -									
Marb	RE	Fat	BW	205	NR	YR	ADG	Projected Sale Wt	
I+.45	I+.09	I+.021	70	601	92	88	2.53	954	

Heifer bull

104 PCC BCC Pioneer 345X

Bull Calved 2/14/10 Reg. 16720626

<p>S A V Final Answer 0035 # S A V Pioneer 7301 S A V Blackbird 5297</p> <p>Sitz Traveler 10089 BT Freda 568M BT Freda 349J</p>	<p>Sitz Traveler 8180 # S A V Emulous 8145 Boyd New Day 8005 # S A V Blackbird 1082</p> <p>Sitz Traveler 5556 # Sitz Erica Everelda 1469 BT Bishop 92B BT Freda 373A</p>	<p>EPDs Sire Dam</p> <p>BW +1.8 +4.3 WW +61 +24 Milk +31 +10 YW +111 +59</p> <p>Dam Production 7 NR 96</p>
---	--	--

BW	WW	Milk	YW	\$EN	\$W	\$F	\$G	\$B	\$A
+3.2	+42	+21	I+85	1.60	20.16	27.28	26.20	45.04	
- Individual Performance -									
Marb	RE	Fat	BW	205	NR	YR	ADG	Projected Sale Wt	
I+.38	I+.24	I+.013	78	777	96	98	3.10	1214	

Heifer bull

105 BCC MAGNITUDE 132X

Bull Calved 3/1/10 Reg. 16702174

<p>O C C Magnitude 805M PARTISOVER MAGNITUDE 823 Partisover Burgess 519</p> <p>M A Broadside 1334-822 J A F Elba Merrick 53U BTR Elba Merrick 230</p>	<p>O C C Emblazon 854E # O C C Pollyanna 878G Sitz Alliance 6595 # Partisover Burgess 320</p> <p>Bon View New Design 878 # MA Miss Emulous 822 Vermilion Yellowstone # B T R Elba Merrick 422</p>	<p>EPDs Sire Dam</p> <p>BW +1.3 +4.7 WW +45 +58 Milk +19 +25 YW +81 +108</p> <p>Dam Production 1 NR 110</p>
---	---	---

BW	WW	Milk	YW	\$EN	\$W	\$F	\$G	\$B	\$A
+3.0	+56	+22	+99	-3.64	26.36	35.89	na	na	
- Individual Performance -									
Marb	RE	Fat	BW	205	NR	YR	ADG	Projected Sale Wt	
na	na	na	81	756	110	100	2.59	1152	

Heifer bull

106 BCC Jaf Power Alliance 113X

Bull Calved 2/23/10 Reg. + 16709248

<p>Sitz Alliance 6595 # H A Power Alliance 1025 H A Rito Lady 4167</p> <p>Prototype 5102 E A R BT Everelda Entense 53K BT Everelda Entense 57D</p>	<p>Sitz Traveler 8180 # Sitz Barbaramere Jet 2698 # C H Stacker 7040 # H 96 Band Lady 3714</p> <p>Rito 2100 G D A R # Band Blanche Em 102 Leachman Right Time # Sitz Everelda Entense 1905</p>	<p>EPDs Sire Dam</p> <p>BW +5.0 +1.3 WW +56 +39 Milk +24 +20 YW +98 +62</p> <p>Dam Production 4 NR 101</p>
--	--	--

BW	WW	Milk	YW	\$EN	\$W	\$F	\$G	\$B	\$A
I+3.2	I+43	I+27	I+80	1.67	27.65	22.03	19.45	41.93	
- Individual Performance -									
Marb	RE	Fat	BW	205	NR	YR	ADG	Projected Sale Wt	
I+.35	I+.09	I+.032	87	708	ET	ET	3.05	1226	

112 Nueta Marbolier 40X

Bull Calved 2/4/10 Reg. + 16824542

S V F Bandolier	Bon View Bando 598 #	EPDs Sire Dam
Hoff Marbolier S C 3100 519	S V F Primrose Lady 9446	BW +4.1 +2.8
Hoff Lady Hi Hand S C 8211	Hoff Hi Hand S C 654 #	WW +48 +39
	Hoff Miss Val S C 313	Milk +28 +14
	S A R Supercharger 8418	YW +88 +61
Hoff Charger S C 242	Hoff Miss Flyer S C E01	Dam Production
Hoff Barbara S C 929 984	O Neills Renovator #	4 NR 99
Hoff Miss Renovation S C 856 #	Hoff Rito 72 of S C 259 #	

BW	WW	Milk	YW	\$EN 4.27	\$W 23.62	\$F 16.92	\$G 15.31	\$B 38.88	
I+3.5	I+44	I+21	I+75	- Individual Performance -					Projected
Marb	RE	Fat	BW	205	NR	YR	ADG	Sale Wt	
I+.08	I+.06	I-.035	89	581	ET	ET	2.53	1064	

116 Krone Bar 942 0027

Bull Calved 3/8/10 Reg. 16788442

Ideal 8423 of 1418 0346	Ideal 1418 of 8103 4286 #	EPDs Sire Dam
Bar 942 of 8423	Ideal 0346 Super X 5189 8107	BW +2.0 +0.2
Miss Rito 942 of 523	Royal Rito L 2	WW +50 +36
	523 4 Point 4 of 16	Milk +17 +20
	Rockn D Ambush 1531 #	YW +97 +67
Wards Flying W Ambush 244	Papa Blackbird 7920	Dam Production
Krone Maiden 4425	Connealy Freightliner #	4 NR 99
Wards Maiden 125 #	Wards 1 Maiden 779	

BW	WW	Milk	YW	\$EN 7.32	\$W 23.77	\$F 19.11	\$G 17.64	\$B 40.31	
+0.8	+38	+18	I+75	- Individual Performance -					Projected
Marb	RE	Fat	BW	205	NR	YR	ADG	Sale Wt	
I+.22	I+.06	I+.002	80	579	89	89	3.33	1002	

Heifer bull

113 TW Upward 139X

Bull Calved 3/5/10 Reg. 16685826

Connealy Onward	Connealy Lead On #	EPDs Sire Dam
SITZ UPWARD 307R	Altune of Conanga 6104	BW +2.4 +3.3
Sitz Henrietta Pride 81M	Sitz Value 7097 #	WW +70 +48
	Sitz Henrietta Pride 1370	Milk +43 +23
	G A R Precision 1680 #	YW +136 +86
FV Precision 1497	JRS Enchantress 16A	Dam Production
FV Miss Sunset T400	Sitz Traveler 8180 #	2 NR 102
FV Miss Sunset P158	FV Miss Sunset 1110	

BW	WW	Milk	YW	\$EN -19.17	\$W 25.30	\$F 50.71	\$G 20.53	\$B 57.85	
+3.4	+61	+33	I+115	- Individual Performance -					Projected
Marb	RE	Fat	BW	205	NR	YR	ADG	Sale Wt	
I+.33	I+.30	I+.017	91	742	106	108	3.79	1286	

117 BCC MAGNITUDE 106X

Bull Calved 2/22/10 Reg. 16840677

O C C Magnitude 805M	O C C Emblazon 854E #	EPDs Sire Dam
PARTISOVER MAGNITUDE 823	O C C Pollyanna 878G	BW +1.3 +0.1
Partisover Burgess 519	Sitz Alliance 6595 #	WW +45 +47
	Partisover Burgess 320	Milk +19 +25
	Hero 6267 of R R 2418 #	YW +81 +86
H A Image Maker 0415 #	H A Rito Blackcap 9038	Dam Production
BCC Marsha 16U	MLA Forever of 278	1 NR 98
SCC Marsha 66S	BT Marsha 56E	

BW	WW	Milk	YW	\$EN 1.61	\$W 27.59	\$F 23.59	\$G na	\$B na	
+0.2	+44	+22	I+82	- Individual Performance -					Projected
Marb	RE	Fat	BW	205	NR	YR	ADG	Sale Wt	
na	na	na	72	714	98	98	3.22	1166	

Heifer bull

114 PCC BCC Eagle Eye 320X

Bull Calved 2/16/10 Reg. 16722861

B C Lookout 7024	O C C Legend 616L	EPDs Sire Dam
BC Eagle Eye 110-7	Gibbet Hill Mignonne E37	BW +3.7 +1.6
B C Pure Pride Erica D 110 #	O C C Doctor 940D #	WW +64 +54
	CAF Pure Pride Ext 99	Milk +22 +27
	YW +106 +98	Dam Production
BT Lead ON 60R	Connealy Lead On #	1 NR 113
BCC Miss Candy 83T	BT Pride 889M	
BT Miss Candy 890R #	BT Rolls Royce 412L	
	Miss Lantana Candy 822	

BW	WW	Milk	YW	\$EN -7.35	\$W 28.70	\$F 37.78	\$G na	\$B na	
I+2.7	I+59	I+25	I+102	- Individual Performance -					Projected
Marb	RE	Fat	BW	205	NR	YR	ADG	Sale Wt	
na	na	na	60	835	97	100	2.93	1065	

Heifer bull

118 BCC Jaf Pioneer 140X

Bull Calved 3/5/10 Reg. 16714456

S A V Final Answer 0035 #	Sitz Traveler 8180 #	EPDs Sire Dam
S A V Pioneer 7301	S A V Emulous 8145	BW +1.8 +2.0
S A V Blackbird 5297	Boyd New Day 8005 #	WW +61 +36
	S A V Blackbird 1082	Milk +31 +13
	Sitz S L S Rainmaker 7596 #	YW +111 +72
North Fork Millennium 9012	Dixie Erica of R R 3230	Dam Production
KA R Rain 084	Krugerrand of Donamere 490 #	6 NR 100
Ka R Krugerrand	Barda 894 B C B R #	

BW	WW	Milk	YW	\$EN -2.71	\$W 30.84	\$F 32.84	\$G 23.81	\$B 47.04	
+1.1	+56	+22	I+96	- Individual Performance -					Projected
Marb	RE	Fat	BW	205	NR	YR	ADG	Sale Wt	
I+.32	I+.30	I+.015	86	765	112	103	3.39	1255	

Recommended for larger heifers

115 Krone 942 0014

Bull Calved 3/21/10 Reg. 16788443

Ideal 8423 of 1418 0346	Ideal 1418 of 8103 4286 #	EPDs Sire Dam
Bar 942 of 8423	Ideal 0346 Super X 5189 8107	BW +2.0 +2.2
Miss Rito 942 of 523	Royal Rito L 2	WW +50 +40
	523 4 Point 4 of 16	Milk +17 +12
	YW +97 +76	Dam Production
BR Midland #	Twin Valley Precision E161 #	2 NR 92
Krone Barbara 6672	BR Royal Lass 7036-19	
Indreland Barbara 9008	B/R New Design 036 #	
	Indreland Ext 7020 #	

BW	WW	Milk	YW	\$EN 6.53	\$W 21.84	\$F 29.70	\$G 25.31	\$B 49.45	
+2.2	+46	+14	I+89	- Individual Performance -					Projected
Marb	RE	Fat	BW	205	NR	YR	ADG	Sale Wt	
I+.44	I+.11	I+.013	85	629	96	100	3.28	1014	

119 BCC PCC 344X

Bull Calved 3/1/10 Reg. 16805865

B C Lookout 7024	O C C Legend 616L	EPDs Sire Dam
BC Eagle Eye 110-7	Gibbet Hill Mignonne E37	BW +3.7 +1.4
B C Pure Pride Erica D 110 #	O C C Doctor 940D #	WW +64 +50
	CAF Pure Pride Ext 99	Milk +22 +21
	YW +106 +98	Dam Production
Three Trees Prime Cut 0145 #	Summitcrest Prime Cut 1G42 #	3 NR 101
Diamond Lucy 8223	Black Tooth Lady B 380 #	
Basin Lucy 178D	G T Maximum #	
	Basin Lucy 855A #	

BW	WW	Milk	YW	\$EN -4.59	\$W 26.95	\$F 38.58	\$G 14.86	\$B 47.84	
I+2.6	I+57	I+22	I+102	- Individual Performance -					Projected
Marb	RE	Fat	BW	205	NR	YR	ADG	Sale Wt	
I+.22	I+.27	I+.029	78			90	2.24	1014	

Heifer bull

122 BCC Jaf Lookout 170X

Bull Calved 3/17/10 Reg. 16824852

B C Lookout 7024 O C C Legend 616L
Limestone Lookout T260 Gibbet Hill Mignonne E37
 S V F Everelda Entense 26N Twin Valley Precision E161 #
 S V F Everelda Entense 104L

W C C Special Design L309 # Bon View New Design 878 #
J&S Elba Merrick 421 N Bar Primrose 2424
 BTR Elba Merrick 230 Vermillion Yellowstone #
 B T R Elba Merrick 422

EPDs	Sire	Dam
BW	+0.1	+4.8
WW	+45	+57
Milk	+19	+21
YW	+82	+96
Dam Production		
	3 NR	108

BW	WW	Milk	YW	\$EN	\$W	\$F	\$G	\$B
+1.4	+52	+20	+91	0.66	28.84	29.38	na	na
- Individual Performance -								
Marb	RE	Fat	BW	205	NR	YR	ADG	Projected Sale Wt
na	na	na	85	714	104	100	2.53	1074



Lot
125

124 BCC UPWARD 162X

Bull Calved 3/14/10 Reg. 16703927

Connealy Onward Connealy Lead On #
SITZ UPWARD 307R Altune of Conanga 6104
 Sitz Henrietta Pride 81M Sitz Value 7097 #
 Sitz Henrietta Pride 1370

Connealy Danny Boy # Connealy Timeline #
JAF Primrose Lady 63T Energy of Conanga 4851
 BT Primrose Lady 95P # Sitz Alliance 5887
 BT Primrose Lady 517M

EPDs	Sire	Dam
BW	+2.4	+2.8
WW	+70	+52
Milk	+43	+16
YW	+136	+91
Dam Production		
	2 NR	104

BW	WW	Milk	YW	\$EN	\$W	\$F	\$G	\$B
+3.0	+61	+30	+114	-15.92	26.27	49.63	21.43	59.81
- Individual Performance -								
Marb	RE	Fat	BW	205	NR	YR	ADG	Projected Sale Wt
1+.32	1+.35	1+.006	89	738	102	100	3.28	1174

125 PPCC BC Mo Magic 322X

Bull Calved 2/20/10 Reg. 2567407

SVF/NJC MO BETTER M217 STF MR Momentum H508
SC MO MAGIC 547 NJC SVF Antoinette K205
 Akers Ruby 2184 Twinvalleyprecision E161
 Thomas Ruby 9534

O C C Bonanza 880B # N Bar Emulation EXT #
Sitz Everelda Entense 2838 Erica Lassie of R R 2373 #
 Sitz Everelda Entense 2473 Sitz Rito 8980 #
 Sitz Everelda Entense 2251

EPDs	Sire	Dam
BW	2.0	+2.3
WW	40.7	+32
Milk	-6.0	+18
YW	92.4	+55
Dam Production		
	10 NR	100

BW	WW	Milk	YW	\$EN	\$W	\$F	\$G	\$B
-0.4	20.3	-3.5	50.4	na	na	na	na	na
- Individual Performance -								
Marb	RE	Fat	BW	205	NR	YR	ADG	Projected Sale Wt
0.49	-0.20	0.08	88	885	na	109	3.51	1286

**Montana
Performance
Bull Co-op™**

Sale Notes

Thanks for coming!

Montana Performance Bull Co-op™

Annual Bull Sale Friday • March 18, 2011 1:00 pm

Barragree/Johnson

Brian Barragree
Richard Johnson
406-322-5163 H
406-780-1219 C

Krone Angus

Chuck Krone
406-322-4605 H
406-321-0303 C

Stillwater Cattle Co.

Rob Aumueller
406-322-4493 H
406-321-2470 C

Winters Livestock

Bodie & Julie Winters
406-962-9163

Nueta Cattle Co.

Shawn Fredericks
406-592-3709

Casey Fredericks
701-548-8323

Susan Fredericks
406-259-2657

Mary Fredericks
701-627-4079

Selling 115 Yearling Angus Bulls

Montana
Performance
Bull
Co-op™

403 Stillwater Drive
Columbus, MT 59019

First Class
US Postage
Paid
Permit No. 6
Hobson, MT